

price **3635**

MISSES' TOPS
XS-S-M-L-XL

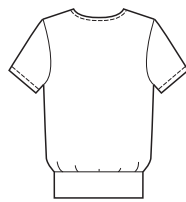
Pull-over tops have deep V-neckline, slightly draped overlapped fronts, self fabric binding on back neckline and fold back facings on front. View A is tunic length, has side hemline slits and full length sleeves. View B has wide waistband and short sleeves.

FABRICS: Designed for stretch knits only with 25% stretch across the grain. Suggested Fabrics: Interlock, jersey, matte jersey, stretch velvet, textured knits.

View A Back



View B Back



STANDARD BODY MEASUREMENTS:

SIZES:	XS	S	M	L	XL	
Bust	31½-32½	34-35½	37-38½	40-41½	43-45	"
	80-83	86-90	94-98	102-106	110-114	cm
Waist	22½-23½	24¾-26	27½-29	31-33	35-37	"
	57-60	63-66	70-74	79-84	89-94	cm
Hip	32¼-34	35½-37	38½-40	41½-43½	45-47	"
	82-86	90-94	98-102	106-110	115-120	cm
Back Waist Length	15½	16	16½	17	17	"
	39	41	42	43	43	cm
	Finished Length at Center Back from Neckline					
View A	28¾	29¾	30¾	31¾	32¾	"
	73	75	78	81	83	cm
View B	22	22½	23	23½	24	"
	56	57	58	59	61	cm

MATERIAL REQUIRED: Fabric requirement allows for nap, one-way design or shading. Extra fabric may be needed to match design or for shrinkage.

SIZES:	XS	S	M	L	XL	
FABRIC 60" (152 cm) WIDE						
View A	1⅜ (1.30)	1⅜ (1.30)	1½ (1.40)	1⅝ (1.50)	1⅞ (1.75)	yd (m)
View B	⅞ (0.80)	1 (0.95)	1 (0.95)	1¼ (1.15)	1½ (1.40)	yd (m)

NOTIONS: Thread, scrap piece of fusible interfacing. **View A:** Scrap piece of non-fusible interfacing.

A



B



A



B

