



price **3639**

MEN'S BIB OVERALLS

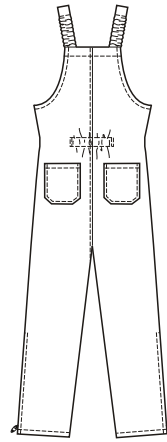
S-M-L-XL-XXL

Overalls are sized to be worn over clothes. They have side pockets, side slits to access inside pockets, chest and back patch pockets, waistband on front, elastic at back waist and in straps, lower leg side seam zippers, snap closures at center front and on chest pockets, and optional overlays on front legs.

FABRICS: Designed for medium to heavyweight woven fabrics.

Suggested Fabrics: Denim, twill, poplin, duck cloth. Optional contrast also in fabrics such as nylon and ripstop.

Overalls Back



STANDARD BODY MEASUREMENTS:

SIZES:	S	M	L	XL	XXL	
Chest	34-36	38-40	42-44	46-48	50-52	"
	86-91	96-101	106-111	116-122	127-132	cm
Waist	28-30	32-34	36-38	40-42	44-46	"
	71-76	81-86	91-96	101-106	111-116	cm
Hip	35-37	39-41	43-45	47-49	51-53	"
	89-94	99-104	109-114	119-124	129-134	cm

Finished Inside Leg Seam 30" (76 cm) — All Sizes

MATERIAL REQUIRED: Fabric requirement allows for nap, one-way design or shading. Extra fabric may be needed to match design or for shrinkage.

SIZES:	S	M	L	XL	XXL	
FABRIC 60" (152 cm) WIDE						
	2 ⁵ / ₈ (2.40)	2 ³ / ₄ (2.55)	3 ¹ / ₄ (3.00)	3 ³ / ₈ (3.10)	3 ¹ / ₂ (3.20)	yd (m)

FABRIC 45" (115 cm) WIDE						
	3 ¹ / ₄ (3.00)	3 ³ / ₈ (3.10)	3 ³ / ₄ (3.45)	3 ³ / ₄ (3.45)	3 ³ / ₄ (3.45)	yd (m)

CONTRAST FOR OPTIONAL OVERLAY 45" (115 cm) or 60" (152 cm) WIDE
1 yd (0.95 m) — All Sizes

LINING 45" (115 cm) or 60" (152 cm) WIDE
1/2 yd (0.50 m) — All Sizes

FUSIBLE INTERFACING 24" (60 cm) WIDE
1/4 yd (0.25 m) — All Sizes

NOTIONS: Thread, seven snap sets, two 1 1/2" (4 cm) buckle sets and strap adjusters, two 18" (45 cm) zippers, 3/4 yd (0.70 m) of 1 1/2" (4 cm) wide elastic.

