



price **3640**

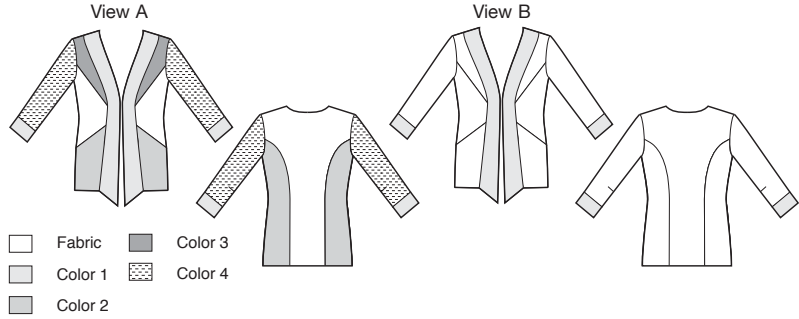
WOMEN'S JACKETS
1X-2X-3X-4X



Semi-fitted jackets have pieced front, shaped front bands, princess seams on back, full length sleeves with cuffs, and hook and eye, loop and buttons, or decorative frog closure. View A is made from five different fabrics. View B has contrast fabric front bands and cuffs.

FABRICS: Designed for medium weight woven fabrics.

Suggested Fabrics: Cotton, cotton types, linen, denim, jaquard, silk types, brocade.



STANDARD BODY MEASUREMENTS:

| SIZES: | 1X | 2X | 3X | 4X | |
|---|------|------|------|-----|----|
| Bust | 45 | 49 | 53 | 57 | " |
| | 114 | 124 | 134 | 144 | cm |
| Waist | 37 | 41 | 45 | 49 | " |
| | 94 | 104 | 114 | 124 | cm |
| Hip | 47 | 51 | 55 | 59 | " |
| | 119 | 129 | 139 | 149 | cm |
| Back Waist Length | 17 | 17¼ | 17½ | 17¾ | " |
| | 43.5 | 44 | 44.5 | 45 | cm |
| Finished Length at Center Back From Neckline | | | | | |
| View A & B | 30¼ | 30½ | 30¾ | 31 | " |
| | 77 | 77.5 | 78 | 79 | cm |

MATERIAL REQUIRED: Fabric requirement allows for nap, one-way design or shading. Extra fabric may be needed to match design or for shrinkage.

| SIZES: | 1X | 2X | 3X | 4X | |
|---------------------------------|--------------|--------------|--------------|--------------|--------|
| FABRIC 60" (152 cm) WIDE | | | | | |
| View A Fabric | 1 (0.95) | 1 (0.95) | 1 (0.95) | 1 (0.95) | yd (m) |
| Color 2 | 7/8 (0.80) | 7/8 (0.80) | 7/8 (0.80) | 7/8 (0.80) | yd (m) |
| Color 3 | 5/8 (0.60) | 5/8 (0.60) | 5/8 (0.60) | 5/8 (0.60) | yd (m) |
| Color 4 | 3/4 (0.70) | 3/4 (0.70) | 3/4 (0.70) | 3/4 (0.70) | yd (m) |
| View A & B Color 1 | 1 1/8 (1.05) | 1 1/8 (1.05) | 1 1/8 (1.05) | 1 1/8 (1.05) | yd (m) |
| View B Fabric | 1 1/8 (1.75) | 1 1/8 (1.75) | 2 (1.85) | 2 1/8 (1.95) | yd (m) |

| | | | | | |
|---------------------------------|--------------|--------------|--------------|--------------|--------|
| FABRIC 45" (115 cm) WIDE | | | | | |
| View A Fabric | 1 1/4 (1.15) | 1 1/4 (1.15) | 1 1/4 (1.15) | 1 1/4 (1.15) | yd (m) |
| Color 2 | 7/8 (0.80) | 7/8 (0.80) | 7/8 (0.80) | 7/8 (0.80) | yd (m) |
| Color 3 | 5/8 (0.60) | 5/8 (0.60) | 5/8 (0.60) | 5/8 (0.60) | yd (m) |
| Color 4 | 3/4 (0.70) | 3/4 (0.70) | 1 (0.95) | 1 1/4 (1.15) | yd (m) |
| View A & B Color 1 | 1 1/8 (1.05) | 1 1/8 (1.05) | 1 1/8 (1.05) | 1 1/8 (1.05) | yd (m) |
| View B Fabric | 2 1/2 (2.30) | 2 1/2 (2.30) | 2 3/4 (2.55) | 3 (2.75) | yd (m) |

| | | | | | |
|---|--------------|--------------|--------------|--------------|--------|
| FUSIBLE INTERFACING 24" (60 cm) WIDE | | | | | |
| View A & B | 1 1/8 (1.05) | 1 1/8 (1.05) | 1 1/8 (1.05) | 1 1/8 (1.05) | yd (m) |

NOTIONS: Thread. Closure: Decorative frog closure, two large decorative buttons or one hook & eye set.



PLUS SIZE