



price **3641**

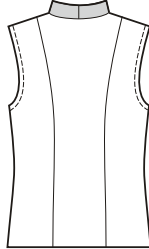
WOMEN'S VESTS
1X-2X-3X-4X

Fitted vest have V-neckline, princess seams, straight cut front band and collar, and armholes finished with self fabric bias cut bindings. View A has tie closure at waist, and front band is made from contrast fabric. View B has tab at back waist with buttons and three button closure on front.

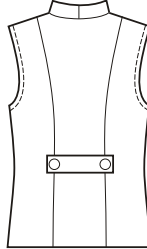
FABRICS: Designed for light to medium weight woven fabrics.

Suggested Fabrics: Cotton, cotton types, calicos, linen, brocade, denim, twill.

VIEW A Back



VIEW B Back



□ Fabric
■ Contrast

STANDARD BODY MEASUREMENTS:

SIZES:	1X	2X	3X	4X	
Bust	45	49	53	57	"
	114	124	134	144	cm
Waist	37	41	45	49	"
	94	104	114	124	cm
Hip	47	51	55	59	"
	119	129	139	149	cm
Back Waist Length	17	17¼	17½	17¾	"
	43.5	44	44.5	45	cm
Finished Length at Center Back					
View A & B	27	27¼	27½	28	"
	68	69	70	71	cm

MATERIAL REQUIRED: Fabric requirement allows for nap, one-way design or shading. Extra fabric may be needed to match design or for shrinkage.

SIZES:	1X	2X	3X	4X	
FABRIC 60" (152 cm) WIDE					
View A Fabric	1¾ (1.60)	1⅞ (1.75)	1⅞ (1.75)	1⅞ (1.75)	yd (m)
Contrast	1⅞ (0.80)	1⅞ (0.80)	1⅞ (0.80)	1⅞ (0.80)	yd (m)
View B	1⅞ (1.75)	2 (1.85)	2⅞ (1.95)	2¼ (2.10)	yd (m)

FABRIC 45" (115 cm) WIDE					
View A Fabric	2¼ (2.10)	2⅝ (2.10)	2½ (2.30)	2½ (2.30)	yd (m)
Contrast	1⅞ (0.80)	1⅞ (0.80)	1⅞ (0.80)	1⅞ (0.80)	yd (m)
View B	2⅝ (2.10)	2⅝ (2.10)	2¾ (2.55)	2⅞ (2.65)	yd (m)

FUSIBLE INTERFACING 24" (60 cm) WIDE					
View A	1⅞ (1.05)	1⅞ (1.05)	1⅞ (1.05)	1⅞ (1.05)	yd (m)
View B	1⅞ (1.05)	1⅞ (1.05)	1⅞ (1.05)	1⅞ (1.05)	yd (m)

NOTIONS: Thread. **View B:** Five 1" (25 mm) buttons.



A



B



A



B

PLUS SIZE

KWIK & EASY™