



price **3645**

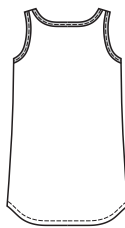
**MISSSES' SLEEPWEAR**  
XS-S-M-L-XL

Designed for lightweight woven fabrics.

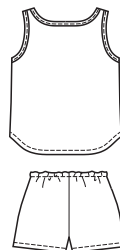
Suggested Fabrics: Cotton, cotton types, lawn, batiste, broadcloth, silk, silk-like fabrics, charmeuse.

Pull-over style gown View A and top View B are sleeveless, have scoop neckline, and shaped bottom edge finished with narrow hem. Neckline and armholes are finished with bias cut bindings. View A gown has contrast bindings. View B pull-on shorts have elastic in casing at waist.

View A Back



View B Back



Size	XS	S	M	L	XL	
<b>Finished Length at Center Back from Natural Neckline</b>						
View A	35 1/2 (90)	36 (91)	36 1/2 (93)	37 (94)	37 (94)	" (cm)
View B Top	23 (58)	23 1/2 (60)	24 (62)	25 (63)	25 1/2 (64)	" (cm)
<b>Finished Inside Leg Seam</b>	View B Shorts 2" (5 cm) — All Sizes					
<b>Material Required:</b> Fabric requirement allows for nap, one-way design or shading. Extra fabric may be needed to match design or for shrinkage.						
<b>Fabric 60" (152 cm) Wide</b>						
View A	1 1/8 (1.05)	1 1/8 (1.05)	1 1/8 (1.05)	1 1/8 (1.05)	1 1/8 (1.05)	yd (m)
View A Contrast	3/4 (0.70)	3/4 (0.70)	3/4 (0.70)	3/4 (0.70)	3/4 (0.70)	yd (m)
View B	1 1/2 (1.40)	1 1/2 (1.40)	1 5/8 (1.50)	1 3/4 (1.60)	1 7/8 (1.75)	yd (m)
<b>Fabric 45" (115 cm) Wide</b>						
View A	1 1/8 (1.05)	2 1/8 (1.95)	2 1/8 (1.95)	2 1/4 (2.10)	2 1/4 (2.10)	yd (m)
View A Contrast	3/4 (0.70)	3/4 (0.70)	3/4 (0.70)	3/4 (0.70)	3/4 (0.70)	yd (m)
View B	2 (1.85)	2 (1.85)	2 1/2 (2.30)	2 5/8 (2.40)	2 3/4 (2.55)	yd (m)

**Notions:** Thread. **View B:** 1 yd (0.95 m) of 3/8" (1 cm) wide elastic.