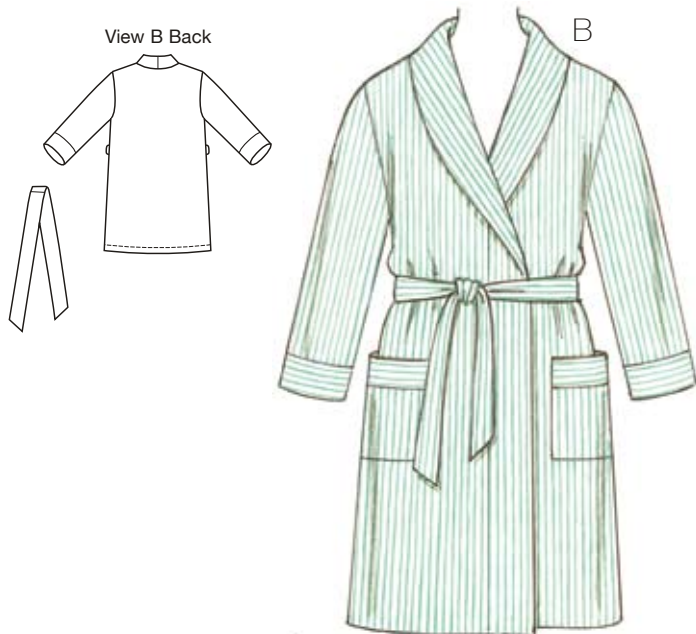




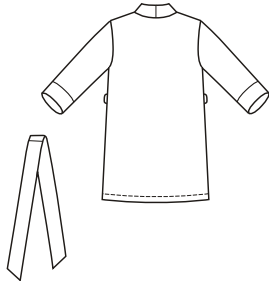
View A Back



- Fabric
- Contrast
- Piping



View B Back



**Designed for lightweight woven fabrics.**

Suggested Fabrics: Cotton, cotton types, lawn, batiste, broadcloth, challis, silk, silk types, charmeuse.

Wrap robes have shawl collar, patch pockets with bands, full length sleeves with sleeve bands, and tie belt. View A upper collar, pocket bands and sleeve bands are from contrast fabric and have piping trim.

price **3646**

**WOMEN'S ROBES**  
1X-2X-3X-4X

Size	1X	2X	3X	4X	
<b>Finished Length from Waist</b>	View A 34" (86 cm) — All Sizes	View B 24" (62 cm) — All Sizes			
<b>Material Required:</b> Fabric requirement allows for nap, one-way design or shading. Extra fabric may be needed to match design or for shrinkage.					
<b>Fabric 60" (152 cm) Wide</b>					
View A Fabric	3 3/8 (3.10)	3 3/8 (3.10)	3 3/8 (3.10)	3 7/8 (3.55)	yd (m)
Contrast	1 3/4 (1.60)	1 3/4 (1.60)	1 3/4 (1.60)	1 3/4 (1.60)	yd (m)
View B Fabric	3 3/8 (3.10)	3 3/8 (3.10)	3 1/2 (3.20)	3 1/2 (3.20)	yd (m)
<b>Fabric 45" (115 cm) Wide</b>					
View A Fabric	3 7/8 (3.55)	4 3/8 (4.00)	4 3/8 (4.00)	4 3/8 (4.00)	yd (m)
Contrast	1 3/4 (1.60)	1 3/4 (1.60)	1 3/4 (1.60)	1 3/4 (1.60)	yd (m)
View B Fabric	4 1/4 (3.90)	4 1/4 (3.90)	4 3/8 (4.00)	4 3/8 (4.00)	yd (m)
<b>Fusible Interfacing 24" (60 cm) Wide</b>					
View A	1 3/4 (1.60)	1 3/4 (1.60)	1 3/4 (1.60)	1 3/4 (1.60)	yd (m)
View B	1 1/2 (1.40)	1 1/2 (1.40)	1 1/2 (1.40)	1 1/2 (1.40)	yd (m)
<b>Notions:</b> Thread. <b>View A:</b> 3 1/4 yd (3 m) of piping.					

PLUS SIZE