



price **3653**

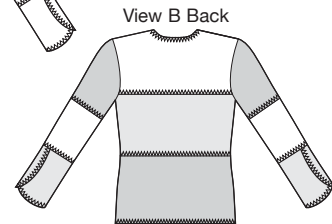
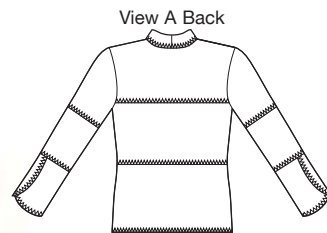
MISSES' JACKETS
XS-S-M-L-XL

Designed for lightweight woven and firm knit fabrics.

Suggested Fabrics: Cotton, cotton types, calicos, challis, rayon and blends, double knit, linen, silk and silk-like fabrics.

KWIK *Serge*
Dual Instructions Included

Jackets have exposed seams which are finished with overlock or zigzag stitches, full length sleeves with overlapping lower sleeves, and sleeves and fronts have shaped bottom edges. View A has neckband with ties. View B is made from three different fabrics and has ties at front edges.



- Fabric
- Contrast I
- Contrast II

Size	XS	S	M	L	XL	
Finished Length at Center Back						
View A & B	24 1/4 (61)	25 1/2 (64)	26 (66)	27 (68)	27 3/4 (70)	" (cm)
Material Required: Fabric requirement allows for nap, one-way design or shading. Extra fabric may be needed to match design or for shrinkage.						
Fabric 60" (152 cm) Wide						
View A	1 1/4 (1.15)	1 3/8 (1.30)	1 3/8 (1.30)	1 3/8 (1.30)	1 3/8 (1.30)	yd (m)
View B	5/8 (0.60)	5/8 (0.60)	5/8 (0.60)	5/8 (0.60)	5/8 (0.60)	yd (m)
Contrast I	1/2 (0.50)	5/8 (0.60)	5/8 (0.60)	5/8 (0.60)	5/8 (0.60)	yd (m)
Contrast II	5/8 (0.60)	5/8 (0.60)	5/8 (0.60)	3/4 (0.70)	3/4 (0.70)	yd (m)
Fabric 45" (115 cm) Wide						
View A	1 5/8 (1.50)	1 5/8 (1.50)	1 3/4 (1.60)	2 1/4 (2.10)	2 1/4 (2.10)	yd (m)
View B	5/8 (0.60)	5/8 (0.60)	5/8 (0.60)	5/8 (0.60)	5/8 (0.60)	yd (m)
Contrast I	1/2 (0.50)	5/8 (0.60)	5/8 (0.60)	7/8 (0.80)	7/8 (0.80)	yd (m)
Contrast II	5/8 (0.60)	5/8 (0.60)	7/8 (0.80)	7/8 (0.80)	1 (0.95)	yd (m)

Notions: Thread.

DUAL INSTRUCTIONS INCLUDED: SERGER (OVERLOCK) AND STANDARD SEWING MACHINES.