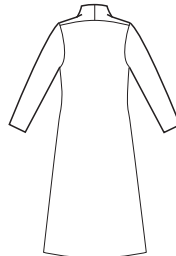




View A Back

View B Back



price **3658**

MISSES' DRESS & TOP
XS-S-M-L-XL

Designed for stretch knits only with 35% stretch across the grain.
Suggested Fabrics: Interlock, matte jersey, panne, lightweight sweater knits.

Fitted pull-over dress and top have V-neckline and draped collar. Front extends forming collar and facing. View A has full length sleeves and View B has short sleeves.

Size	XS	S	M	L	XL	
Finished Length from Natural Neckline at Center Back						
View A	35 3/4 (90)	36 1/4 (92)	36 3/4 (93)	37 1/4 (94)	37 3/4 (95)	" (cm)
View B	21 1/4 (54)	21 3/4 (55)	22 1/2 (57)	23 (58)	23 3/4 (60)	" (cm)
Material Required: Fabric requirement allows for nap, one-way design or shading. Extra fabric may be needed to match design or for shrinkage.						
Fabric 60" (152 cm) Wide						
View A	1 3/4 (1.60)	1 7/8 (1.75)	2 (1.85)	2 (1.85)	2 1/8 (1.95)	yd (m)
View B	7/8 (0.80)	1 (0.95)	1 1/4 (1.15)	1 3/8 (1.30)	1 3/8 (1.30)	yd (m)
Notions: Thread.						