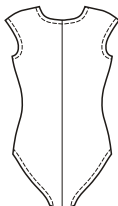
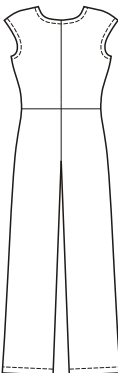




View A Back



View B Back



price

**3671**

**MISSES' LEOTARD & UNITARD**  
XS-S-M-L-XL

Designed for two-way stretch fabric with 75% stretch.

Suggested Fabrics: Cotton Lycra®, Nylon Lycra®, swimwear fabric, stretch velvet.

Very close fitting leotard and unitard have wrap style front, V-neckline finished with elastic and cap sleeves finished with narrow hems. View A Leotard has leg openings finished with elastic. View B Unitard has waist seam, slightly flared legs with no side seams and narrow long belt.

Size	XS	S	M	L	XL	
<b>Inside Leg to Floor</b>	31 1/2" (80 cm) — All Sizes					
<b>Material Required:</b>	Fabric requirement allows for nap, one-way design or shading. Extra fabric may be needed to match design or for shrinkage.					
<b>Fabric 60" (152 cm) Wide</b> with greatest degree of stretch on crosswise grain						
View A	7/8 (0.80)	7/8 (0.80)	1 (0.95)	1 (0.95)	1 1/8 (1.05)	yd (m)
View B	1 5/8 (1.50)	1 3/4 (1.60)	1 3/4 (1.60)	1 7/8 (1.75)	2 (1.85)	
<b>Fabric 60" (152 cm) Wide</b> with greatest degree of stretch on lengthwise grain						
View A	1 (0.95)	1 (0.95)	1 1/8 (1.05)	1 1/8 (1.05)	1 1/4 (1.15)	yd (m)
View B	1 1/2 (1.40)	1 1/2 (1.40)	1 5/8 (1.50)	2 1/8 (1.95)	2 1/4 (2.10)	yd (m)
<b>Fabric 45" (115 cm) Wide</b> with greatest degree of stretch on crosswise grain						
View A	1 1/8 (1.05)	1 1/4 (1.15)	1 3/8 (1.30)	1 1/2 (1.40)	1 1/2 (1.40)	yd (m)
View B	2 3/8 (2.20)	2 3/8 (2.20)	2 1/2 (2.30)	2 1/2 (2.30)	3 (2.75)	yd (m)
<b>Fabric 45" (115 cm) Wide</b> with greatest degree of stretch on lengthwise grain						
View A	1 3/8 (1.30)	1 1/2 (1.40)	1 5/8 (1.50)	1 3/4 (1.60)	1 3/4 (1.60)	yd (m)
View B	2 1/8 (1.95)	2 1/4 (2.10)	2 3/8 (2.20)	2 1/2 (2.30)	2 5/8 (2.40)	yd (m)
<b>Notions:</b>	Thread. <b>View A:</b> 2 3/4 yd (2.55 m) of 3/8" (1 cm) wide elastic. <b>View B:</b> 1 1/2 yd (1.40 m) of 3/8" (1 cm) wide elastic.					