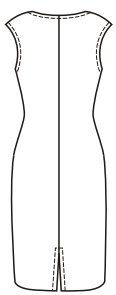
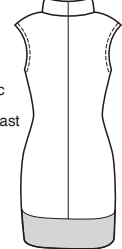




View A Back



View B Back



□ Fabric
■ Contrast

price **3676**

MISSES' DRESSES
XS-S-M-L-XL

Designed for firm stretch knits.
Suggested Fabrics: Double knit, jersey, French terry, sweatshirt fleece.

Fitted pull-over dresses have extended shoulders forming cap sleeves, and armholes finished with facings. View A has boat neckline finished with facing, and back hemline slit. View B has wide, double fold-over collar, and extension on bottom edge from contrast fabric.

Size	XS	S	M	L	XL	
Finished Length from Natural Waist	View A 26" (66 cm) — All Sizes		View B 20" (51 cm) — All Sizes			
Material Required: Fabric requirement allows for nap, one-way design or shading. Extra fabric may be needed to match design or for shrinkage.						
Fabric 60" (152 cm) Wide						
View A	1 1/2 (1.40)	1 1/2 (1.40)	1 1/2 (1.40)	1 1/2 (1.40)	1 1/2 (1.40)	yd (m)
View B	1 1/4 (1.15)	1 3/8 (1.30)	1 3/8 (1.30)	1 3/8 (1.30)	1 3/8 (1.30)	yd (m)
Contrast	1/4 (0.25)	1/4 (0.25)	1/4 (0.25)	1/4 (0.25)	1/4 (0.25)	yd (m)
Fusible Interfacing 24" (60 cm) Wide						
View A	3/8 (0.35)	3/8 (0.35)	3/8 (0.35)	3/8 (0.35)	3/8 (0.35)	yd (m)
View B	1/4 (0.25)	1/4 (0.25)	3/8 (0.35)	3/8 (0.35)	3/8 (0.35)	yd (m)
Notions: Thread.						