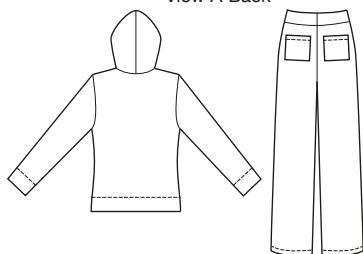
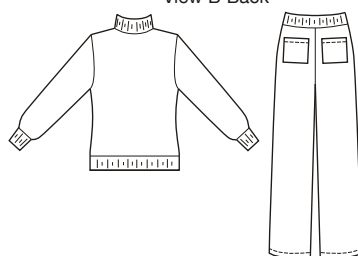




View A Back



View B Back



price **3678** **MISSES' JACKETS & PANTS**
XS-S-M-L-XL

Designed for stretch knits only.

Suggested Fabrics: Sweatshirt fleece, velour, double knit, Polarfleece®, French terry.

Close fitting jackets have front zipper closure and kangaroo pockets. Close fitting pants have elastic at waist and drawstring, and patch pockets on back. View A jacket has hood and pants have self fabric waistband. View B jacket has stand-up collar, cuffs and bottom band made from ribbing, and pants have ribbing waistband.

| Size | XS | S | M | L | XL | |
|--|--------------|--------------|--------------|--------------|--------------|--------|
| Finished Length of Jacket at Center Back | | | | | | |
| View A & B | 23 (58) | 23 1/4 (59) | 23 1/2 (60) | 25 1/2 (65) | 25 1/2 (65) | " (cm) |
| Finished Inside Leg Seam 30" (75 cm) — All Sizes | | | | | | |
| Material Required: Fabric requirement allows for nap, one-way design or shading. Extra fabric may be needed to match design or for shrinkage. | | | | | | |
| Fabric 60" (152 cm) Wide | | | | | | |
| View A | 2 3/4 (2.55) | 2 3/4 (2.55) | 2 7/8 (2.65) | 3 1/2 (3.20) | 3 1/2 (3.20) | yd (m) |
| View B | 2 3/8 (2.20) | 2 1/2 (2.30) | 2 1/2 (2.30) | 3 1/4 (3.00) | 3 1/4 (3.00) | yd (m) |
| Ribbing 28" (70 cm) Wide | | | | | | |
| View B | 7/8 (0.80) | 7/8 (0.80) | 7/8 (0.80) | 7/8 (0.80) | 7/8 (0.80) | yd (m) |
| Notions: Thread, 1 yd (0.95 m) of 1 1/2" (4 cm) wide elastic, one drawstring for waist. View A: one separating zipper—20" (50 cm) for sizes XS, S, & M; 22" (55 cm) for sizes L & XL. View B: one separating zipper—22" (55 cm) for sizes XS, S, & M; 24" (60 cm) for sizes L & XL. | | | | | | |