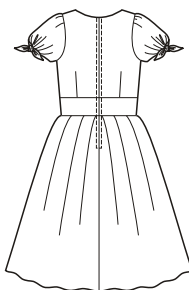
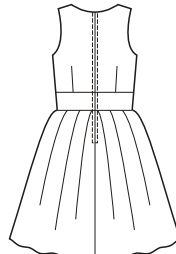




View A Back



View B Back



price **3682** MISSES' DRESSES
XS-S-M-L-XL

Designed for light to medium weight woven fabric. Suggested Fabrics: Cotton, cotton types, linen, challis, rayon and blends, silk and silk types.

Dresses have fitted bodice with waist inset, center back zipper, and full pleated skirt. View A has wide round neckline, and short gathered sleeves with ties at bottom edge. View B sleeveless dress has wide V-neckline.

Size	XS	S	M	L	XL	
Finished Length from Natural Waist		View A 26" (66 cm) — All Sizes	View B 22" (56 cm) — All Sizes			
Material Required: Fabric requirement allows for nap, one-way design or shading. Extra fabric may be needed to match design or for shrinkage.						
Fabric 60" (152 cm) Wide						
View A	2 1/2 (2.30)	2 1/2 (2.30)	3 1/2 (3.20)	3 5/8 (3.35)	3 3/4 (3.45)	yd (m)
View B	2 3/8 (2.20)	2 3/8 (2.20)	3 1/8 (2.85)	3 1/4 (3.00)	3 1/2 (3.20)	yd (m)
Fabric 45" (115 cm) Wide						
View A	4 1/2 (4.15)	4 1/2 (4.15)	4 1/2 (4.15)	4 5/8 (4.25)	4 5/8 (4.25)	yd (m)
View B	4 (3.70)	4 (3.70)	4 (3.70)	4 1/8 (3.80)	4 1/8 (3.80)	yd (m)
Fabric 45" (115 cm) Wide						
View A	3/8 (0.35)	3/8 (0.35)	3/8 (0.35)	3/8 (0.35)	3/8 (0.35)	yd (m)
Notions: Thread, one 20" (50 cm) zipper.						