

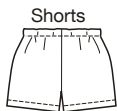
Dress



Pants with Ruffle



Pants



Shorts



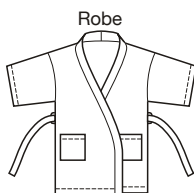
Hat with Ruffle



Tank Top



T-Shirt



Robe



Swimsuit



Sun Hat



Fits 18"
(45 cm) Dolls



price **3688**

**PLAYTIME
DOLL CLOTHES**

DRESS

Dress has double bodice with shoulder straps, gathered skirt with bottom edge ruffle and back Velcro® closure. Bottom ruffle and bodice are made from two different contrast fabrics. **Designed for woven fabrics.**

PANTS & SHORTS

Pants and shorts have casing at waist with elastic or drawstring. Pants can be made with contrast ruffles at bottom edges of legs. **Designed for woven fabrics.**

HAT WITH RUFFLE

Hat has ruffle made from contrast fabric. **Designed for woven fabrics.**

TANK TOP

Tank top has armholes and neckline finished with narrow hems and center back Velcro® closure. **Designed for stretch knit fabrics.**

T-SHIRT

T-shirt has short sleeves and center back Velcro® closure. **Designed for stretch knit fabrics.**

ROBE

Robe has front band, patch pockets and tie belt. **Designed for woven fabrics.**

SWIMSUIT

Swimsuit has scoop back, elastic at neckline and leg openings, and armholes finished with hems. **Designed for two-way stretch fabric with 75% stretch, such as swimwear fabric.**

SUN HAT

Hat has four panel crown and wide brim with topstitching detail. **Designed for woven fabrics.**