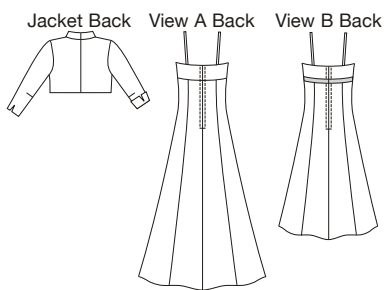




A



B



Jacket Back View A Back View B Back



Designed for woven fabrics.

Suggested Fabrics: Satin, taffeta, shantung, brocade, dupioni, linen, cotton types.

Close fitting dresses have sweetheart neckline, double bodice, empire waist, princess seams, narrow shoulder straps, center back zipper, and optional ribbon trim with bow. Bolero style jacket has lined front and back, lapels, princess seams, and three-quarter length sleeves with slits that can be worn folded up or down.

price **3736**

MISSES' DRESSES & JACKET
XS-S-M-L-XL

Size	XS	S	M	L	XL	
Finished Length from Natural Waist	View A 40 1/2" (103 cm) — All Sizes			View B 26" (67 cm) — All Sizes		
Finished Length at Center Back						
Jacket	14 (36)	14 1/2 (37)	15 1/4 (39)	16 (41)	17 (43)	" (cm)
Material Required: Fabric requirement allows for nap, one-way design or shading. Extra fabric may be needed to match design or for shrinkage.						
Fabric 60" (152 cm) Wide						
View A	2 3/4 (2.55)	2 3/4 (2.55)	2 7/8 (2.65)	3 (2.75)	3 (2.75)	yd (m)
View B	2 (1.85)	2 (1.85)	2 (1.85)	2 (1.85)	2 (1.85)	yd (m)
Jacket	1 3/8 (1.30)	1 3/8 (1.30)	1 1/2 (1.40)	1 1/2 (1.40)	1 1/2 (1.40)	yd (m)
Fabric 45" (115 cm) Wide						
View A	3 5/8 (3.35)	3 3/4 (1.45)	4 (3.70)	4 1/8 (3.80)	4 1/8 (3.80)	yd (m)
View B	2 3/8 (2.20)	2 1/2 (2.30)	2 1/2 (2.30)	2 1/2 (2.30)	2 1/2 (2.30)	yd (m)
Jacket	1 3/4 (1.60)	1 3/4 (1.60)	1 7/8 (1.75)	1 7/8 (1.75)	1 7/8 (1.75)	yd (m)