



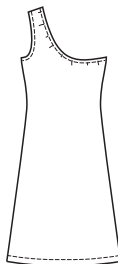
price **3778**

MISSES' DRESSES
XS-S-M-L-XL

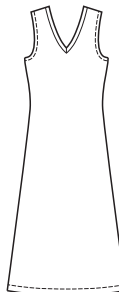
Designed for stretch knits only with 25% stretch across the grain.
Suggested Fabrics: Jersey, matte jersey, interlock, stretch terry, panne.

Close fitting pull-over dresses have slightly flared skirt and armholes are finished with narrow hems. View A one shoulder dress has elastic at neckline. View B has V-neckline on front and back finished with narrow self fabric neckband.
Pattern includes 1/4" (6 mm) seam allowances.

View A Back



View B Back



Size	XS	S	M	L	XL	
Finished Length from Natural Waist	View A 22" (56 cm) — All Sizes			View B 25" (64 cm) — All Sizes		
Material Required: Fabric requirement allows for nap, one-way design or shading. Extra fabric may be needed to match design or for shrinkage.						
Fabric 60" (152 cm) Wide						
View A	1 1/4 (1.15)	1 1/4 (1.15)	1 1/4 (1.15)	1 1/4 (1.15)	1 1/4 (1.15)	yd (m)
View B	1 3/8 (1.30)	1 3/8 (1.30)	1 3/8 (1.30)	1 3/8 (1.30)	1 3/8 (1.30)	yd (m)
Notions: Thread. View A: 3/8" (1 cm) wide elastic—1 yd (0.95 m) for XS-S; 1 1/4 yd (1.15 m) for M-L-XL.						