

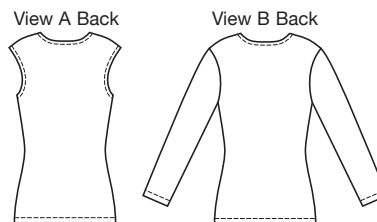


price **3790** MISSES' ASSYMETRIC TOPS
XS-S-M-L-XL

Designed for stretch knits only with 25% stretch across the grain.
Suggested Fabrics: Jersey, matte jersey, interlock.



Close fitting tops have asymmetrical front neckline finished with facings, front shoulder inset with gathers, and gathers on left front. View A has cap sleeves and armholes are finished with self fabric bindings. View B has dropped shoulders and full length sleeves. Pattern includes 1/4" (6 mm) seam allowances.



| Size | XS | S | M | L | XL | |
|--|--------------|--------------|--------------|--------------|--------------|--------|
| Finished Length from Natural Neckline at Center Back | | | | | | |
| View A & B | 23 1/2 (60) | 24 1/2 (63) | 25 1/2 (65) | 26 1/2 (67) | 27 1/2 (70) | " (cm) |
| Material Required: Fabric requirement allows for nap, one-way design or shading. Extra fabric may be needed to match design or for shrinkage. | | | | | | |
| Fabric 60" (152 cm) Wide | | | | | | |
| View A | 1 (0.95) | 1 (0.95) | 1 1/8 (1.05) | 1 1/8 (1.05) | 1 1/8 (1.05) | yd (m) |
| View B | 1 5/8 (1.50) | 1 3/4 (1.60) | 1 3/4 (1.60) | 1 7/8 (1.75) | 1 7/8 (1.75) | yd (m) |
| Fusible Interfacing 24" (60 cm) Wide | | | | | | |
| View A & B | 1/4 (0.25) | 1/4 (0.25) | 1/4 (0.25) | 1/4 (0.25) | 1/4 (0.25) | yd (m) |
| Notions: Thread. | | | | | | |