

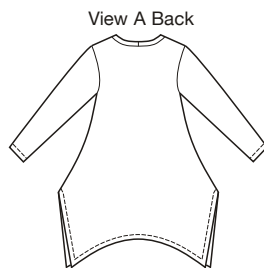


Designed for stretch knits only with 35% stretch across the grain.

Suggested Fabrics: Jersey, matte jersey, interlock.

Misses' tops have self fabric neckband. View A has V-neckline, full length sleeves, and flared uneven bottom edge, sides are longer. View B has scoop neckline, short sleeves, and side seams are gathered with ribbon in casings. Pattern includes 1/4" (6 mm) seam allowances.

price **3802** MISSES' TOPS
XS-S-M-L-XL



Size	XS	S	M	L	XL	
Finished Length at Center Back from Natural Neckline						
View A & B	27 1/2 (70)	28 1/2 (72)	29 1/2 (75)	30 1/2 (77)	31 1/2 (80)	' (cm)
Material Required: Fabric requirement allows for nap, one-way design or shading. Extra fabric may be needed to match design or for shrinkage.						
Fabric 60" (152 cm) Wide						
View A	1 3/4 (1.60)	1 3/4 (1.60)	2 1/8 (1.95)	2 1/4 (2.10)	2 3/8 (2.20)	yd (m)
View B	1 1/8 (1.05)	1 1/8 (1.05)	1 1/4 (1.15)	1 3/8 (1.30)	1 3/8 (1.30)	yd (m)
Notions: Thread, scrap piece of fusible interfacing. View B: 2 1/2 yd (2.30 m) ribbon for ties.						