



Designed for firm knits and woven fabric.

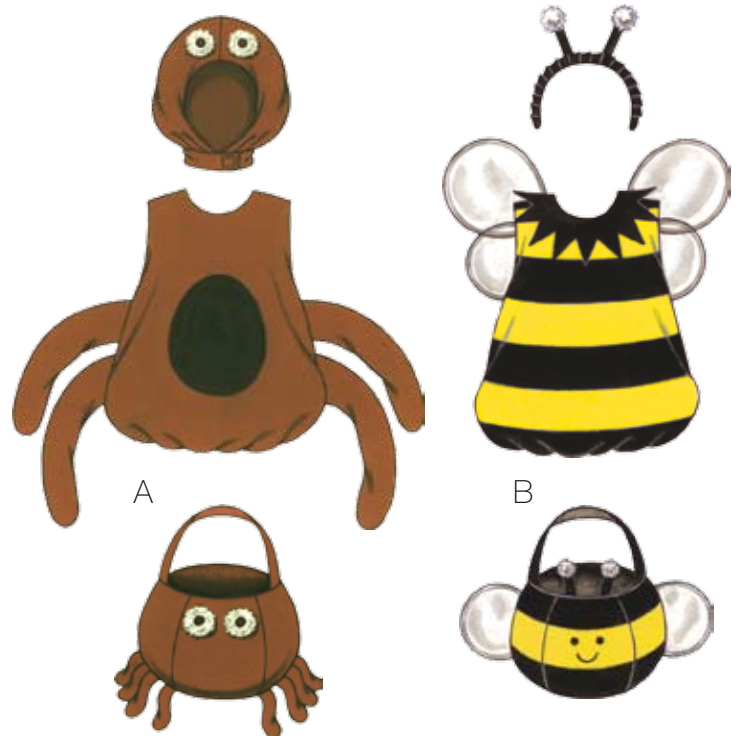
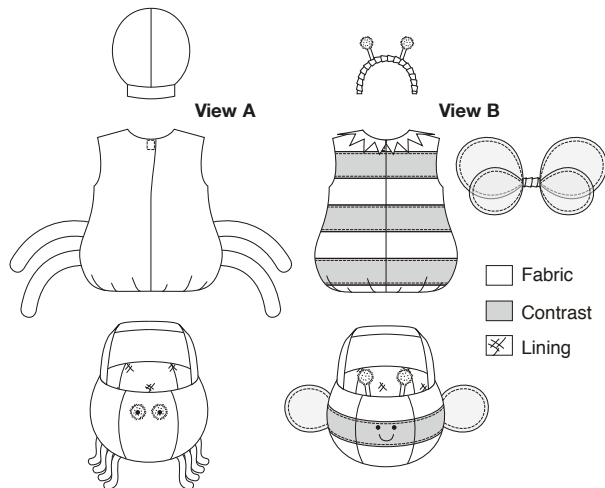
Suggested Fabrics: Polarfleece®, sweatshirt fleece, felt, cotton, cotton types, polyester and blends.

price **3803**

CHILDREN'S SPIDER & BUMBLE BEE COSTUMES & TREAT BAGS

XS(1) - S(2) - M(3) - L(4) - XL(5)

Spider, Bumble Bee, and Treat Bags. Sleeveless bodies are lined, filled with fiberfill and bottom edge is gathered to lining. View A Spider has four legs, and belly from contrast fabric. Hood is lined, filled with fiberfill, gathered to neckband with Velcro® closure, and has pom-pom and button eyes. View B Bumble Bee has three stripes made from contrast fabric and collar. Wings from sheer have wire at outer edge. Headband is covered with fabric and has antennae with pom-poms. Lined treat bags have six panels, round bottom, and handle. Spider bag has eight legs, and pom-pom and button eyes. Bumble Bee bag has one contrast stripe, wings in seams, antennae with pom-poms, and embroidered face. Pattern includes 1/4" (6 mm) seam allowances.



BODY MEASUREMENTS:

SIZES:	XS (1)	S (2)	M (3)	L (4)	XL (5)	year
Age	1	2	3	4	5	" (cm)
Height	31 (79)	34 (87)	37 (94)	40 (101)	43 (109)	

Velcro® is a registered trademark of Velcro Industries. Polarfleece® is a registered trademark of Malden Mills.

CRAFTS