



**VIEW A S-M-L**

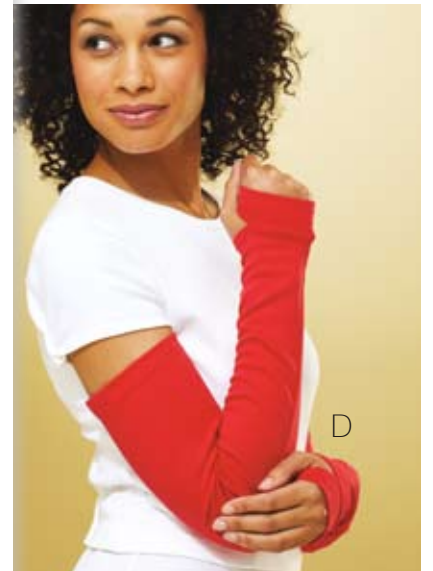
Fitted leg warmers have inside leg seam and shaped bottom edge with elastic stirrup.

**VIEW B S-M-L**

Straight leg warmers have inside leg seam and hemmed top and bottom edges.

**VIEW C & D S-M-L**

View C sleeves have hemmed top and bottom edges.  
View D sleeves have cuff and opening for thumb at cuff seam.



price **3809**

**LEG WARMERS, SLEEVES & SCARFS**

Designed for stretch knits only with 25% stretch across the grain.  
Suggested Fabrics: Interlock, jersey, textured knits.  
Pattern includes 1/4" (6 mm) seam allowances.

**VIEW E One Size**

Tubular scarf is double.

**VIEW F One Size**

Single layer scarf has evenly spaced tucks and outer edges are unfinished.

**VIEW G One Size**

Fringed scarf is made from four different color fabrics and edges are unfinished.