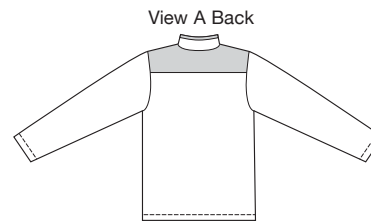




price **3817** MEN'S SHIRTS
S-M-L-XL-XXL

Designed for heavyweight stretch knits.
Suggested Fabrics: Polarfleece®, heavy sweatshirt fleece, blanket fleece.

Pull-over shirts have full length sleeves, front zipper opening, stand-up collar, and contrast fabric yoke. Inside collar is made from contrast fabric and folds to outside forming trim. View B has front tabs, two part sleeves, and breast pocket with extension. Tabs, back sleeve, and pocket extension are made from contrast fabric. Pattern includes 1/4" (6 mm) seam allowances.



□ Fabric
■ Contrast



Size	XS	S	M	L	XL	
Finished Length at Center Back						
View A & B	27 (68)	28 (71)	28 3/4 (73)	30 (76)	30 3/4 (78)	" (cm)
Material Required: Fabric requirement allows for nap, one-way design or shading. Extra fabric may be needed to match design or for shrinkage.						
Fabric 60" (152 cm) Wide						
View A	1 3/4 (1.60)	1 3/4 (1.60)	1 3/4 (1.60)	1 7/8 (1.75)	1 7/8 (1.75)	yd (m)
View B	1 (0.95)	1 5/8 (1.50)	1 5/8 (1.50)	1 3/4 (1.60)	1 3/4 (1.60)	yd (m)
Contrast 60" (152 cm) Wide						
View A	1/4 (0.25)	1/4 (0.25)	1/4 (0.25)	1/4 (0.25)	1/4 (0.25)	yd (m)
View B	7/8 (0.80)	7/8 (0.80)	7/8 (0.80)	7/8 (0.80)	7/8 (0.80)	yd (m)
Notions: Thread, one 9" (23 cm) zipper. View A: 2" x 9" (5 cm x 23 cm) piece of fusible interfacing. View B: Scrap piece of fusible interfacing.						