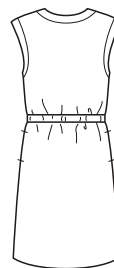
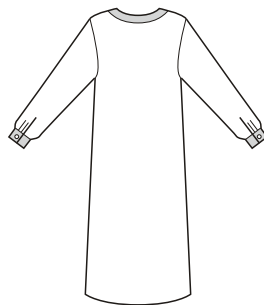




View A Back

View B Back



price **3820**

**MISSSES' DRESSES**  
XS-S-M-L-XL

**Designed for light to medium weight woven fabrics.**

Suggested Fabrics: Cotton, silk, rayon, challis, linen, crepe, georgette, charmeuse.

Dresses have extended shoulders, V-neckline, bands at fronts and neckline, and front button closure. View A has full length sleeves with cuffs. Cuffs and bands are from contrast fabric. View B has armhole bands forming cap sleeves, pockets in side seams, and casing on outside with belt at waist. Pattern includes 1/4" (6 mm) seam allowances.

Size	XS	S	M	L	XL	
<b>Finished Length at Center Back</b>						
View A	41 1/2 (106)	42 (107)	42 3/4 (109)	43 1/4 (110)	43 3/4 (111)	" (cm)
View B	37 (94)	37 1/4 (95)	37 3/4 (96)	38 1/4 (97)	39 (99)	" (cm)
<b>Material Required:</b> Fabric requirement allows for nap, one-way design or shading. Extra fabric may be needed to match design or for shrinkage.						
<b>Fabric 60" (152 cm) Wide</b>						
View A	2 (1.85)	2 (1.85)	2 (1.85)	2 (1.85)	2 (1.85)	yd (m)
View B	1 3/4 (1.60)	1 3/4 (1.60)	1 7/8 (1.75)	2 (1.85)	2 1/4 (2.10)	yd (m)
<b>Fabric 45" (115 cm) Wide</b>						
View A	2 (1.85)	2 (1.85)	3 (2.75)	3 1/4 (3.00)	3 3/8 (3.10)	yd (m)
View B	2 3/8 (2.20)	2 3/8 (2.20)	2 3/4 (2.55)	2 7/8 (2.65)	2 7/8 (2.65)	yd (m)
<b>Contrast 45" (115 cm) or 60" (152 cm) Wide</b>						
View A	1 3/8 (1.30)	1 3/8 (1.30)	1 3/8 (1.30)	1 3/8 (1.30)	1 3/8 (1.30)	yd (m)
<b>Fusible Interfacing 22" (56 cm) Wide</b>						
View A	1 1/4 (1.15)	1 1/4 (1.15)	1 1/4 (1.15)	1 1/4 (1.15)	1 1/4 (1.15)	yd (m)
View B	1 3/8 (1.30)	1 3/8 (1.30)	1 3/8 (1.30)	1 3/8 (1.30)	1 3/8 (1.30)	yd (m)
<b>Notions:</b> Thread. <b>View A:</b> Nine 1/2" (12 mm) buttons. <b>View B:</b> Six 1/2" (12 mm) buttons.						