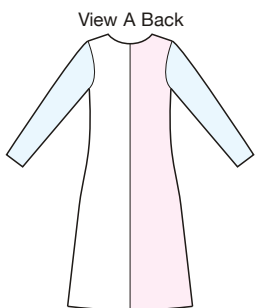


View A Front



View A Back

- Fabric
- Contrast I
- Contrast II



View B Back



Designed for stretch knits only with 35% stretch across the grain.
Suggested Fabrics: Interlock, jersey, matte jersey, velour.

View A pull-over dress has full length sleeves, V-neckline with draped inset, and neckline is finished with facing. Dress is made from three different color fabrics. View B pull-over top has three-quarter length sleeves, and V-neckline. Right end of collar is gathered to front, left end of collar loops under right and is stitched to center front seam. Pattern includes 1/4" (6 mm) seam allowances.



price **3826**

MISSES' DRESS & TOP
XS-S-M-L-XL

Size	XS	S	M	L	XL	
Finished Length at Center Back						
View A	38 (96)	38 1/2 (98)	39 (99)	39 1/2 (100)	39 1/2 (100)	" (cm)
View B	21 1/4 (54)	22 (56)	22 3/4 (58)	23 1/2 (59)	24 1/4 (61)	" (cm)
Material Required: Fabric requirement allows for nap, one-way design or shading. Extra fabric may be needed to match design or for shrinkage.						
Fabric 60" (152 cm) Wide						
View A						
Fabric & Contrast I Each	1 1/4 (1.15)	1 1/4 (1.15)	1 1/4 (1.15)	1 1/4 (1.15)	1 1/4 (1.15)	yd (m)
Contrast II	7/8 (0.80)	7/8 (0.80)	1 (0.95)	1 (0.95)	1 (0.95)	yd (m)
View B Fabric	1 1/2 (1.40)	1 1/2 (1.40)	2 1/8 (1.95)	2 1/8 (1.95)	2 1/8 (1.95)	yd (m)
Fusible Interfacing 22" (56 cm) Wide						
View A	5/8 (0.60)	5/8 (0.60)	5/8 (0.60)	5/8 (0.60)	5/8 (0.60)	yd (m)
Non-Fusible Interfacing 22" (56 cm) Wide						
View B	1/8 (0.15)	1/8 (0.15)	1/8 (0.15)	1/8 (0.15)	1/8 (0.15)	yd (m)
Notions: Thread.						