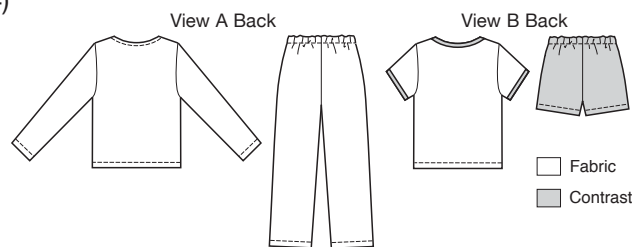




price **3831** **GIRLS' SLEEPY-TIME PAJAMAS**
XS(4-5) - S(6) - M(7-8) - L(10) - XL(12-14)

Designed for stretch knits only with 25% stretch across the grain.
Suggested Fabrics: Interlock, jersey, textured knits, thermal knits.

Pull-over tops have lapped fronts and pull-on pants have elastic in casing at waist. View A top has full length sleeves, neckline and front edges finished with narrow hems, and optional ribbon bows. View A pants are full length. View B top has short sleeves, and binding at neckline and bottom of sleeves from contrast fabric. View B shorts are from contrast fabric. Pattern includes 1/4" (6 mm) seam allowances.



| Size | XS(4-5) | S(6) | M(7-8) | L(10) | XL(12-14) | |
|--|-------------|-------------|-------------|-------------|-------------|--------|
| Finished Length of Top at Center Back | | | | | | |
| View A & B | 15 1/2 (39) | 16 1/2 (42) | 18 (45) | 19 1/2 (49) | 20 1/2 (53) | " (cm) |
| Finished Inside Leg Seam | | | | | | |
| View A | 16 1/2 (42) | 18 1/2 (47) | 20 1/2 (52) | 23 (58) | 26 (66) | " (cm) |
| View B | 1 3/4 (4.5) | 2 (5) | 2 1/4 (5.5) | 2 1/2 (6) | 2 3/4 (7) | " (cm) |

Material Required: Fabric requirement allows for nap, one-way design or shading. Extra fabric may be needed to match design or for shrinkage.

Fabric 60" (152 cm) Wide

| | | | | | | |
|-----------------|--------------|--------------|--------------|------------|--------------|--------|
| View A | 1 3/8 (1.30) | 1 3/8 (1.30) | 1 5/8 (1.50) | 2 (1.85) | 2 1/4 (2.10) | yd (m) |
| View B Fabric | 5/8 (0.60) | 5/8 (0.60) | 3/4 (0.70) | 3/4 (0.70) | 7/8 (0.80) | yd (m) |
| View B Contrast | 1/2 (0.50) | 1/2 (0.50) | 1/2 (0.50) | 5/8 (0.60) | 5/8 (0.60) | yd (m) |

Notions: Thread, 3/4 yd (0.70 m) of 3/4" (2 cm) wide elastic. **View A:** 1/8 yd (0.15 m) of fusible interfacing, Optional: decorative bows or ribbon for bows.