



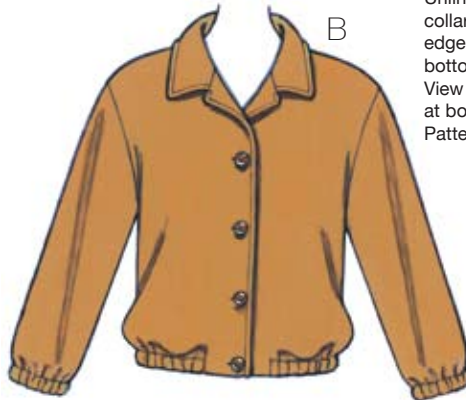
price **3842** MISSES' JACKETS  
XS-S-M-L-XL

**Designed for heavyweight stretch knits only.**  
Suggested Fabrics: Polarfleece®, berber fleece, sweatshirt fleece.

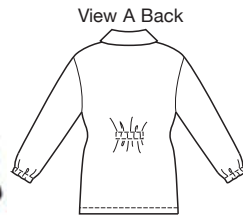
Unlined loose fitting jackets have extended shoulders, collar, front button closure, and elastic at bottom edges of sleeves. View A has patch pockets, hemmed bottom edge, and casing with elastic at back waist. View B has pockets in side seams and elastic in casing at bottom edge. Pattern includes 1/4" (6 mm) seam allowances.



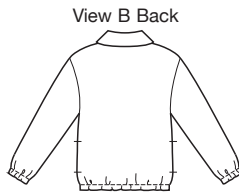
A



B



View A Back



View B Back

Size	XS	S	M	L	XL	
<b>Finished Length at Center Back</b>						
View A	26 1/4 (67)	27 1/2 (70)	28 3/4 (73)	30 (76)	31 (79)	" (cm)
View B	22 1/2 (57)	23 1/2 (60)	24 1/2 (62)	25 1/2 (65)	26 1/2 (67)	" (cm)
<b>Material Required:</b> Fabric requirement allows for nap, one-way design or shading. Extra fabric may be needed to match design or for shrinkage.						
<b>Fabric 60" (152 cm) Wide</b>						
View A	1 7/8 (1.75)	1 7/8 (1.75)	2 (1.85)	2 (1.85)	2 1/8 (1.95)	yd (m)
View B	1 3/4 (1.60)	1 3/4 (1.60)	1 3/4 (1.60)	1 7/8 (1.75)	2 1/2 (2.30)	yd (m)
<b>Lining 45" (115 cm) or 60" (152 cm) Wide</b>						
View B	1/4 (0.25)	1/4 (0.25)	1/4 (0.25)	1/4 (0.25)	1/4 (0.25)	yd (m)
<b>Fusible Interfacing 22" (56 cm) Wide</b>						
View A or B	7/8 (0.90)	7/8 (0.90)	1 (0.95)	1 (0.95)	1 (0.95)	yd (m)
<b>Notions:</b> Thread, five 7/8" (22 mm) buttons. <b>View A:</b> 7/8 yd (0.80 m) of 1" (2.5 cm) wide elastic. <b>View B:</b> 2 yd (1.85 m) of 1" (2.5 cm) wide elastic.						

Polarfleece® is a registered trademark of Malden Mills.