

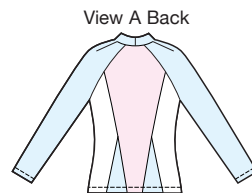


3843

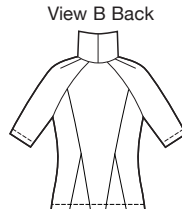
MISSSES' SHAPED TOPS
XS-S-M-L-XL

Designed for stretch knits only with 35% stretch across the grain.
Suggested Fabrics: Interlock, jersey, matte jersey, fabrics with Lycra®.

Very close fitting pull-over tops have princess seams, raglan sleeves and triangular insets on front and back. View A has lapped fronts, full length sleeves, and is made from three contrast fabrics. View B has elbow length sleeves and turtleneck. Pattern includes 1/4" (6 mm) seam allowances.



View A Back



View B Back

- ☐ Fabric
- ☐ Contrast I
- ☐ Contrast II

Size	XS	S	M	L	XL	
Finished Length at Center Back						
View A & B	22 1/2 (58)	23 1/2 (60)	24 (62)	25 (64)	26 (66)	" (cm)
Material Required: Fabric requirement allows for nap, one-way design or shading. Extra fabric may be needed to match design or for shrinkage.						
Fabric 60" (152 cm) Wide						
View A Fabric	5/8 (0.60)	3/4 (0.70)	3/4 (0.70)	3/4 (0.70)	3/4 (0.70)	yd (m)
View A Contrast I	3/4 (0.70)	7/8 (0.80)	7/8 (0.80)	7/8 (0.80)	7/8 (0.80)	yd (m)
View A Contrast II	1 (0.95)	1 (0.95)	1 1/8 (1.05)	1 1/8 (1.05)	1 1/8 (1.05)	yd (m)
View B	1 1/4 (1.15)	1 1/4 (1.15)	1 1/2 (1.40)	1 1/2 (1.40)	1 5/8 (1.50)	yd (m)
Notions: Thread.						