



**Designed for woven fabrics.**

Suggested Fabrics: Cotton, cotton types, linen, linen types, silk, silk types, wool, wool types, jacquard.

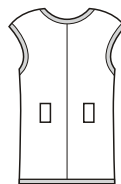


**3846**

**MISSES' CAP SLEEVE VESTS**  
XS-S-M-L-XL

Lined vests have extended shoulders forming cap sleeves, and outer edges and armholes are finished with contrast bias cut bindings. View A has hidden front snap closure, belt loops, and is shown with purchased belt. View B has patch pockets finished with bias cut contrast bindings, and two button front closure. Pattern includes 5/8" (1.5 cm) seam allowances.

View A Back



View B Back



□ Fabric  
■ Contrast



Size	XS	S	M	L	XL	
<b>Finished Length at Center Back</b>						
View A	26 (66)	27 (68)	28 (71)	29 (73)	30 (76)	" (cm)
View B	21 (53)	22 (56)	23 (58)	24 (61)	25 (63)	" (cm)
<b>Material Required:</b> Fabric requirement allows for nap, one-way design or shading. Extra fabric may be needed to match design or for shrinkage.						
<b>Fabric &amp; Lining 60" (152 cm) Wide</b>						
View A Each	7/8 (0.80)	7/8 (0.80)	1 (0.95)	1 (0.95)	1 1/2 (1.40)	yd (m)
View B Each	3/4 (0.70)	7/8 (0.80)	7/8 (0.80)	1 (0.95)	1 1/4 (1.15)	yd (m)
<b>Fabric &amp; Lining 45" (115 cm) Wide</b>						
View A Each	1 5/8 (1.50)	1 5/8 (1.50)	1 3/4 (1.60)	1 7/8 (1.75)	1 7/8 (1.75)	yd (m)
View B Each	1 3/8 (1.30)	1 3/8 (1.30)	1 1/2 (1.40)	1 1/2 (1.40)	1 5/8 (1.50)	yd (m)
<b>Contrast Fabric 45" (115 cm) or 60" (152 cm) Wide for Binding</b>						
View A & B	7/8 (0.80)	7/8 (0.80)	7/8 (0.80)	1 (0.95)	1 1/8 (1.05)	yd (m)
<b>Fusible Interfacing 22" (56 cm) Wide</b>						
View A	7/8 (0.80)	7/8 (0.80)	1 (0.95)	1 (0.95)	1 (0.95)	yd (m)
View B	3/4 (0.70)	3/4 (0.70)	7/8 (0.80)	7/8 (0.80)	7/8 (0.80)	yd (m)

**Notions:** Thread. **View A:** Four large sew-on snap sets, purchased belt. **View B:** Two 1" (25 mm) buttons.