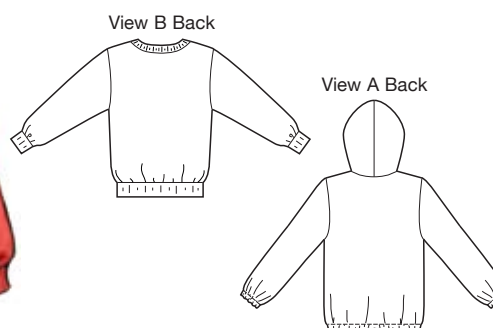




price **3847** MISSES' PULL-OVER TOPS
XS-S-M-L-XL

Designed for lightweight woven fabrics.
Suggested Fabrics: Challis, handkerchief linen, charmeuse, georgette, lace, chiffon.

Pull-over loose fitting tops have full length sleeves. View A has hood, front slit opening, kangaroo pocket, and elastic in casings at bottom edge and bottom edges of sleeves. View B has ribbing neckband, cuffs, and waistband, and front is made from contrast fabric. Pattern includes 1/4" (6 mm) seam allowances.



Size	XS	S	M	L	XL	
Finished Length at Center Back from Natural Neckline (Does not allow for blousing)						" (cm)
View A & B	23 1/2 (60)	24 (61)	24 1/2 (62)	25 (64)	26 (66)	
Material Required: Fabric requirement allows for nap, one-way design or shading. Extra fabric may be needed to match design or for shrinkage.						
Fabric 60" (152 cm) Wide						
View A	1 3/4 (1.60)	1 7/8 (1.75)	1 7/8 (1.75)	2 (1.85)	2 (1.85)	yd (m)
View B	3/4 (0.70)	3/4 (0.70)	7/8 (0.80)	1 3/8 (1.30)	1 1/2 (1.40)	yd (m)
Contrast	3/4 (0.70)	3/4 (0.70)	3/4 (0.70)	7/8 (0.80)	7/8 (0.80)	yd (m)
Fabric 45" (115 cm) Wide						
View A	2 (1.85)	2 1/8 (1.95)	2 3/4 (2.55)	2 3/4 (2.55)	2 7/8 (2.65)	yd (m)
View B	1 3/8 (1.30)	1 3/8 (1.30)	1 3/8 (1.30)	1 1/2 (1.40)	1 1/2 (1.40)	yd (m)
Contrast	3/4 (0.70)	3/4 (0.70)	3/4 (0.70)	7/8 (0.80)	7/8 (0.80)	yd (m)
Ribbing 28" (71 cm) Wide						
View B	5/8 (0.60)	5/8 (0.60)	5/8 (0.60)	5/8 (0.60)	5/8 (0.60)	yd (m)
Fusible Interfacing 22" (56 cm) Wide						
View A	3/8 (0.35)	3/8 (0.35)	3/8 (0.35)	3/8 (0.35)	3/8 (0.35)	yd (m)
Notions: Thread.						