

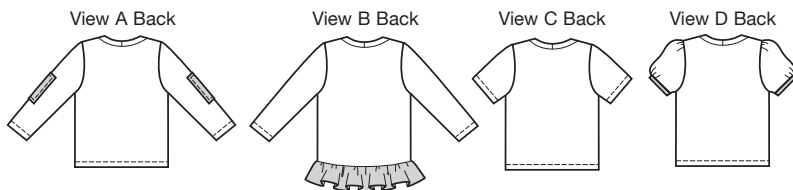


Designed for stretch knits only with 25% stretch across the grain.
Suggested Fabrics: Interlock, textured knits, jersey.
Contrast in lightweight woven fabric such as cotton, cotton types.

Pull-over shirts have self fabric neckband and optional appliques. View A has full length sleeves with contrast elbow patches. View B has full length sleeves, and contrast ruffle at bottom edge. View C has short sleeves. View D has short gathered sleeves with bias cut contrast binding. Pattern includes 1/4" (6 mm) seam allowances.

price **3863** TODDERS' FUN SHIRTS
T1-T2-T3-T4

Fabric
 Contrast



Size	T1	T2	T3	T4	
Finished Length at Center Back					
View A, C & D	13 (33)	14 (35)	14 3/4 (37)	15 3/4 (40)	" (cm)
View B	14 1/2 (37)	15 1/2 (39)	16 1/2 (42)	17 1/2 (44)	" (cm)

Material Required: Fabric requirement allows for nap, one-way design or shading.
Extra fabric may be needed to match design or for shrinkage.

Fabric 60" (152 cm) Wide	T1	T2	T3	T4	
View A, B, C & D	1/2 (0.50)	1/2 (0.50)	1/2 (0.50)	5/8 (0.60)	yd (m)

Contrast
View A Patches: 6" x 10" (15 cm x 25 cm) Piece — All Sizes
View B Ruffle: 1/4 yd (0.25 m) of 45" (115 cm) or 60" (152 cm) Wide Fabric — All Sizes
View D Bindings: 9" x 9" (23 cm x 23 cm) Piece — All Sizes

Notions: Thread. **View B:** 3/4 yd (0.70 m) of 1/4" (6 mm) wide clear elastic.
For Appliqué: Scrap pieces of fabrics, paper backed fusible web and tear-away materials.