

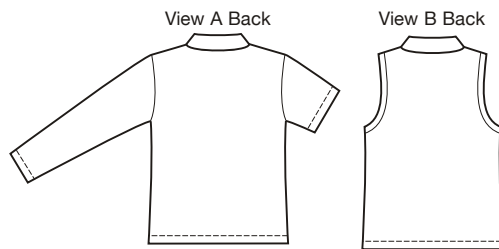


**Designed for stretch knits only with 25% stretch across the grain.**  
Suggested Fabrics: Interlock, jersey, textured knits, matte jersey.

price  **3866**

**WOMEN'S TOPS**  
1X-2X-3X-4X

Pull-over tops. View A has collar with collar stand in one, front placket with button closure, bust darts, and full length or short sleeves. View B sleeveless top has collar, contrast front inset, and armholes finished with self fabric bands.  
Pattern includes 1/4" (6 mm) seam allowances.



Size	1X	2X	3X	4X	
<b>Finished Length at Center Back</b>					" (cm)
View A & B	25 (64)	26 (66)	26 1/2 (68)	27 1/2 (70)	
<b>Material Required:</b> Fabric requirement allows for nap, one-way design or shading. Extra fabric may be needed to match design or for shrinkage.					
<b>Fabric 58" (148 cm) Wide</b>					
View A Long Sleeves	1 7/8 (1.75)	1 7/8 (1.75)	1 7/8 (1.75)	1 7/8 (1.75)	yd (m)
Short Sleeves	1 3/8 (1.30)	1 3/8 (1.30)	1 3/4 (1.60)	1 3/4 (1.60)	yd (m)
View B Fabric	1 1/8 (1.05)	1 1/8 (1.05)	1 1/2 (1.40)	1 1/2 (1.40)	yd (m)
Contrast	1/4 (0.25)	1/4 (0.25)	1/4 (0.25)	1/4 (0.25)	yd (m)
<b>Fusible Interfacing 22" (56 cm) Wide</b>					
View A	3/8 (0.35)	3/8 (0.35)	3/4 (0.70)	3/4 (0.70)	yd (m)
View B	1/2 (0.50)	1/2 (0.50)	1/2 (0.50)	1/2 (0.50)	yd (m)
<b>Notions:</b> Thread. <b>View A:</b> Three 5/8" (15 mm) buttons. <b>View B:</b> One 5/8" (15 mm) button.					

PLUS SIZE