



A



B



3893

MISSES' DRESSES

Sizes: XS-S-M-L-XL

DESIGNED FOR WOVEN FABRICS.

Suggested Fabrics: Cotton, linen, wool, velveteen, denim, gabardine, leather, suede, suede cloth, faux leather.

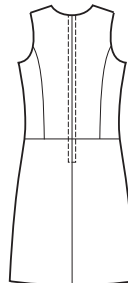
SIZE	XS	S	M	L	XL		SIZE	XS	S	M	L	XL	
FABRIC & LINING 58" (148 cm) WIDE							FABRIC & LINING 44" (112 cm) WIDE						
A – Each	1 ⁵ / ₈ 1.50	1 ⁵ / ₈ 1.50	1 ⁵ / ₈ 1.50	1 ⁷ / ₈ 1.75	1 ⁷ / ₈ 1.75	yd m	A – Each	2 1.85	2 1.85	2 ¹ / ₄ 2.10	2 ¹ / ₄ 2.10	2 ³ / ₈ 2.20	yd m
B – Each	1 ³ / ₄ 1.60	1 ³ / ₄ 1.60	1 ³ / ₄ 1.60	2 1.85	2 1.85	yd m	B – Each	2 1.85	2 1.85	2 ³ / ₈ 2.20	2 ³ / ₈ 2.20	2 ³ / ₈ 2.20	yd m
FUSIBLE INTERFACING 22" (56 cm) WIDE							FINISHED LENGTH FROM NATURAL WAIST						
A & B	5/8 0.60	5/8 0.60	5/8 0.60	5/8 0.60	5/8 0.60	yd m	A	22" (56 cm) – All Sizes					
							B	26" (66 cm) – All Sizes					

NOTIONS: Thread, one 22" (56 cm) zipper.

For additional information see envelope or visit www.kwiksew.com

Lined, fitted dresses have princess seams on front and back bodice, drop waist, and center back zipper. View A has round neckline and patch pockets on front skirt with side openings. View B has scoop neckline and back hemline slit. Pattern includes 5/8" (1.5 cm) seam allowances.

View A Back



View B Back

