

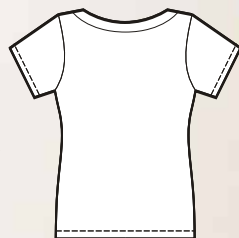
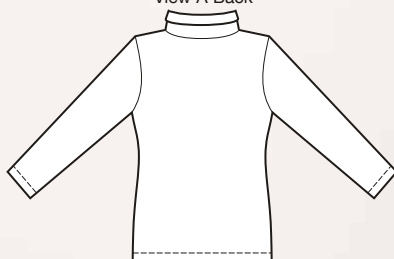
# Ruched Neck Tops

KNIT TOPS



View A Back

View B Back



**3915**

**MISSSES' RUCHED NECK TOPS**

Sizes: XS-S-M-L-XL

DESIGNED FOR STRETCH KNITS ONLY WITH 35% STRETCH ACROSS THE GRAIN.  
Suggested Fabrics: Interlock, jersey, and textured knits.

FINISHED LENGTH FROM NECKLINE						NOTIONS	
SIZE	XS	S	M	L	XL		
A&B	23 58	23 <sup>3</sup> / <sub>4</sub> 60	24 <sup>3</sup> / <sub>4</sub> 63	25 <sup>1</sup> / <sub>2</sub> 65	26 <sup>1</sup> / <sub>2</sub> 67	in cm	Thread. <b>View A:</b> Four <sup>3</sup> / <sub>8</sub> " (10 mm) buttons.
<b>FABRIC 58" (148 cm) WIDE</b>						<b>INTERFACING 22" (56 cm) WIDE</b>	
A	1 <sup>1</sup> / <sub>2</sub> 1.40	1 <sup>5</sup> / <sub>8</sub> 1.50	1 <sup>3</sup> / <sub>4</sub> 1.60	1 <sup>3</sup> / <sub>4</sub> 1.60	1 <sup>7</sup> / <sub>8</sub> 1.75	yd m	A Non-Fusible <sup>1</sup> / <sub>8</sub> yd (0.15 m)
B	1 <sup>1</sup> / <sub>4</sub> 1.15	1 <sup>1</sup> / <sub>4</sub> 1.15	1 <sup>1</sup> / <sub>4</sub> 1.15	1 <sup>3</sup> / <sub>8</sub> 1.30	1 <sup>3</sup> / <sub>8</sub> 1.30	yd m	B Fusible <sup>3</sup> / <sub>8</sub> yd (0.35 m)

Pull-over tops are close fitting. View A has full length sleeves and V-neckline with lapped collar that is gathered at front neckline with four decorative buttons and loops. View B has short sleeves and wide round faced neckline with neckband that is gathered on front.

Pattern includes 1/4" (6 mm) seam allowances.