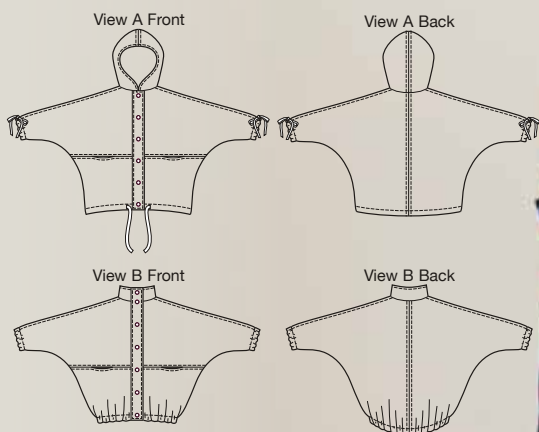


# Dolman Sleeve Jackets



JACKETS



Oversized dolman sleeve jacket has front plackets, topstitching details, snap closure, and curved bottom edge—back is longer. View A has lined hood and self-fabric drawstrings at bottom edge and sleeves. View B has stand-up collar and elastic at bottom edge and sleeves. Pattern includes 5/8" (1.5 cm) seam allowances.

## 3917 MISSES' DOLMAN SLEEVE JACKETS

Sizes: XS-S-M-L-XL

| <b>DESIGNED FOR MEDIUM WEIGHT WOVEN FABRICS.</b>                     |      |      |      |      |      |   |      |      |      |      |      |      |         |
|--|------|------|------|------|------|---|------|------|------|------|------|------|---------|
| Suggested Fabrics: Twill, gabardine, denim, cotton, linen, Supplex®. |      |      |      |      |      |   |      |      |      |      |      |      |         |
| <b>FINISHED LENGTH AT CENTER BACK</b>                                |      |      |      |      |      | <b>FUSIBLE INTERFACING 22" (56 cm) WIDE</b>   |      |      |      |      |      |      |         |
| SIZE   | XS   | S    | M    | L    | XL   |   | SIZE | XS   | S    | M    | L    | XL   |         |
| A & B  | 28   | 29½  | 30½  | 32   | 33½  | in<br>cm  | A    | ¾    | ¾    | ¾    | ¾    | ¾    | yd<br>m |
|  | 71   | 75   | 78   | 81   | 85   |   | B    | 7/8  | 7/8  | 7/8  | 1    | 1    | yd<br>m |
| <b>FABRIC 58" (148 cm) WIDE</b>                                      |      |      |      |      |      | <b>FABRIC 44" (112 cm) WIDE</b>   |      |      |      |      |      |      |         |
| A  | 3    | 3    | 3⅛   | 3¼   | 3½   | yd<br>m   | A    | 3½   | 3⅝   | 3¾   | 4    | 4⅜   | yd<br>m |
|  | 2.75 | 2.75 | 2.85 | 3.00 | 3.20 |   |      | 3.20 | 3.35 | 3.45 | 3.70 | 4.00 |         |
| B  | 2¾   | 2⅞   | 3    | 3⅜   | 3¾   | yd<br>m   | B    | 3¼   | 3⅝   | 3⅝   | 3¾   | 4    | yd<br>m |
|  | 2.55 | 2.65 | 2.75 | 2.85 | 3.00 |   |      | 3.00 | 3.10 | 3.35 | 3.45 | 3.70 |         |
| <b>LINING 30" (75 cm) WIDE (Minimum Width)</b>                       |      |      |      |      |      | <b>NOTIONS:</b> Thread. <b>View A:</b> Six snaps. <b>View B:</b> Seven snaps, 1⅞ yd (1.30 m) of ¾" (2 cm) wide elastic. |      |      |      |      |      |      |         |
| A  | 5/8  | 5/8  | 5/8  | 5/8  | 5/8  | yd<br>m   |      |      |      |      |      |      |         |
|  | 0.60 | 0.60 | 0.60 | 0.60 | 0.60 |   |      |      |      |      |      |      |         |