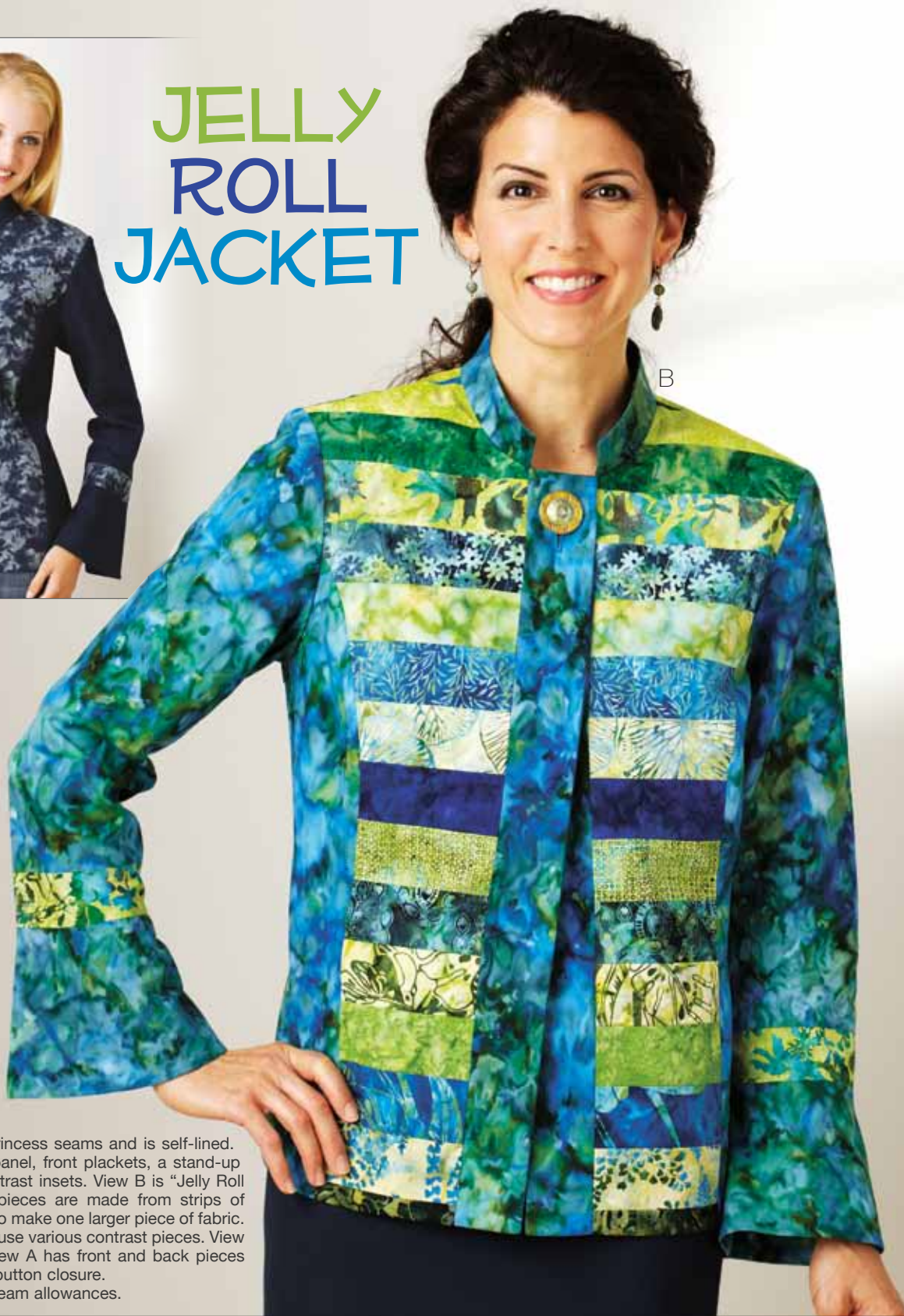


A



JELLY ROLL JACKET

B



JACKETS

This slightly fitted jacket has princess seams and is self-lined. Details include a center back panel, front plackets, a stand-up collar, and flared cuffs with contrast insets. View B is "Jelly Roll friendly." The front and back pieces are made from strips of contrast fabrics sewn together to make one larger piece of fabric. Jelly Roll strips can be used, or use various contrast pieces. View B has a one-button closure. View A has front and back pieces from contrast fabric and a five-button closure. Pattern includes 5/8" (1.5 cm) seam allowances.

3918

MISSES' JELLY ROLL JACKET

Sizes: XS-S-M-L-XL

DESIGNED FOR WOVEN FABRICS.

Suggested Fabrics: Cotton, cotton types, batiks, linen, lightweight denim, rayon & blends. Contrast View B: Strips of fabric from a Jelly Roll, or strips cut from various contrast fabrics as desired.

FINISHED LENGTH AT CENTER BACK						VIEW B CONTRAST*						
SIZE	XS	S	M	L	XL	SIZE	XS	S	M	L	XL	
A & B	23 58	23¾ 60	24¾ 63	25½ 65	26½ 67	58" Wide	1 0.95	1 0.95	1½ 1.05	1½ 1.05	1½ 1.05	yd m
						44" Wide	1 0.95	1 0.95	1½ 1.05	1¼ 1.15	1¾ 1.30	yd m
FABRIC 58" (148 cm) WIDE						FABRIC 44" (112 cm) WIDE						
A & B	2½ 2.30	2½ 2.40	2½ 2.40	2½ 2.40	2¾ 2.55	A & B	3 2.75	3½ 3.20	3⅝ 3.35	3⅝ 3.35	3¾ 3.45	yd m
A	7/8 0.80	7/8 0.80	7/8 0.80	7/8 0.80	1 0.95	A	7/8 0.80	1 0.95	1 0.95	1 0.95	1 0.95	yd m
FUSIBLE INTERFACING 22" (56 cm) WIDE						NOTIONS: Thread. View A: Five 7/8" buttons. View B: One 1¼" button.						
A & B	¾ 0.70	¾ 0.70	¾ 0.70	¾ 0.70	¾ 0.70							yd m

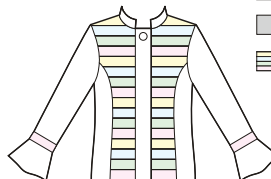
View A Front



View A Back

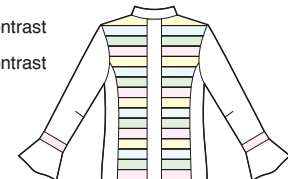


View B Front



□ Fabric
■ Contrast
▨ Contrast

View B Back



*Approximately 25-35 Jelly Roll Strips (2½") are needed. Fabric strips are to be sewn together making a piece of fabric the sizes noted in the chart.