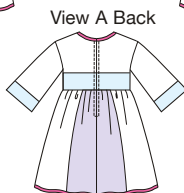
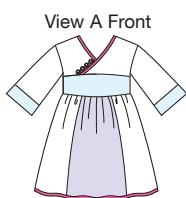


kelsey's best dresses



Dresses have lapped front bodice, waist inset, gathered skirt with contrast panels, center back zipper, and neckline and bottom edge are finished with bias cut bindings. View A has decorative loops and buttons, and full length sleeves with contrast cuffs. View B has short sleeves finished with bias cut bindings and decorative ribbon trim at waist. Pattern includes 5/8" (1.5 cm) seam allowances.



- Fabric
- Color I
- Color II
- Color III
- Trim

3921

TODDLERS' DRESSES

Sizes: T1-T2-T3-T4

DESIGNED FOR LIGHTWEIGHT WOVEN FABRICS.

Suggested Fabrics: Cotton, cotton types, calico, chambray, seersucker, and handkerchief linen.

FINISHED LENGTH AT CENTER BACK						SIZE				T1	T2	T3	T4
SIZE	T1	T2	T3	T4									
A & B	16 40	17½ 44	19 48	20 51	in cm	NOTIONS: Thread, one zipper 10" (25 cm) for T1; 12" (30 cm) for T2, T3, & T4. View A: Four 5/8" (15 mm) buttons. View B: 1½ yd (1.40 m) of 1" (2.5 cm) wide ribbon.							
FABRIC 58" (148 cm) WIDE						FABRIC 44" (112 cm) WIDE							
A	5/8 0.60	5/8 0.60	3/4 0.70	3/4 0.70	yd m	A	7/8 0.80	7/8 0.80	1 0.95	1 0.95	yd m		
B	1/2 0.50	1/2 0.50	5/8 0.60	5/8 0.60	yd m	B	3/4 0.70	3/4 0.70	3/4 0.70	7/8 0.80	yd m		
Color I	3/8 0.35	3/8 0.35	1/2 0.50	1/2 0.50	yd m	Color I	3/8 0.35	3/8 0.35	1/2 0.50	1/2 0.50	yd m		
Color II	3/8 0.35	3/8 0.35	3/8 0.35	3/8 0.35	yd m	Color II	1/2 0.50	1/2 0.50	1/2 0.50	1/2 0.50	yd m		
Color III	5/8 0.60	5/8 0.60	5/8 0.60	5/8 0.60	yd m	Color III	5/8 0.60	5/8 0.60	5/8 0.60	5/8 0.60	yd m		