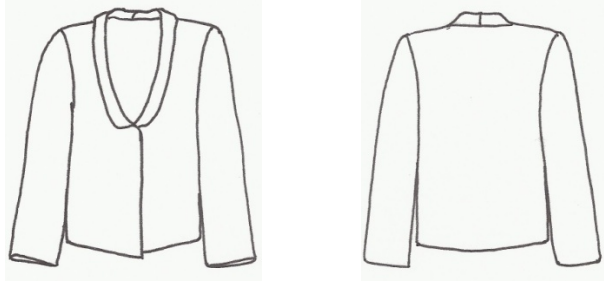


LOES HINSE patterns are based on the designs for her boutique in Carmel, California. Her concept reflects soft feminine shapes with simple lines that are easy to mix and match. Because of this concept, the patterns can be made in a variety of fabrics that can be used again and again. Loes' European training and years of experience working with a variety of women with different needs and lifestyles resulted in an understanding of timeless, yet modern clothing.



Description – This pattern is a narrow elongated Peter Pan collar added to a converted Biarritz jacket pattern. Can be used for both View A and View B of the Biarritz Jacket. **The Biarritz Jacket is not included in this pattern.**

Suggested Fabrics – Wool, rayon, velvet, raw silk, microfiber, linen, double knits, boucle and blends.

Notions – Three each silk covered snaps and decorative buttons. One pair of shoulder pads measuring 6" x 3 1/2" x 5/8". One 5" strip of Velcro.

Yardage Chart

Inches	XXS	XS	S	M	L	XL	XXL
A 45	2 7/8	2 7/8	2 7/8	2 7/8	3 1/4	3 1/4	3 1/4
A 54	2 1/8	2 1/8	2 1/8	2 1/4	2 3/8	2 5/8	2 5/8
A 60	2 1/8	2 1/8	2 1/8	2 1/8	2 3/4	2 5/8	2 5/8
B 45	3 1/8	3 1/8	3 1/8	3 1/8	3 3/8	3 3/8	3 3/8
B 54	2 3/8	2 3/8	2 3/8	2 3/8	2 1/2	2 1/2	2 3/4
B 60	2 3/8	2 3/8	2 3/8	2 3/8	2 1/2	2 1/2	2 3/4

Sizing Chart

(Note: Measure pattern pieces before cutting to determine correct size)

	XXS	XS	S	M	L	XL	XXL
Bust	33 (84cm)	35 (89cm)	37 (94cm)	39 (99cm)	41 (104cm)	44 (112cm)	47 (119cm)
Hip	34 (86cm)	36 (91cm)	38 (96cm)	40 (102cm)	42 (107cm)	45 (115cm)	48 (122cm)

LOES HINSE Studio 2011 loeshinse@yahoo.com



LOES HINSE
studio

Biarritz Multiples
No. 1002



Multisized Petite through Plus