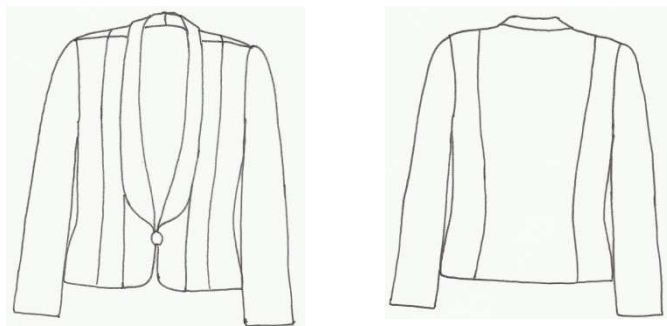


LOES HINSE patterns are based on the designs for her boutique in Carmel, California. Her concept reflects soft feminine shapes with simple lines that are easy to mix and match. Because of this concept, the patterns can be made in a variety of fabrics that can be used again and again. Loes' European training and years of experience working with a variety of women with different needs and lifestyles resulted in an understanding of timeless, yet modern clothing.



**Description** – Princess seam hip length jacket. Bust ease is 1 1/2", hip ease is 1".

**Suggested Fabrics** – Wool, rayon, velvet, raw silk, microfiber, linen, double knits, fleece, boucle and blends.

**Notions** – One button measuring 1". Thread button loop closure from matching thread color. One pair of shoulder pads measuring 6"x 3 1/2"x 5/8". One 5" strip of Velcro.

#### Yardage Chart

Inches (m)	XXS	XS	S	M	L	XL	XXL
45 (1.15)	2 1/8 (1.9m)	2 1/8 (1.9m)	2 1/8 (1.9m)	2 1/4 (2.1m)	2 1/4 (2.1m)	2 1/4 (2.1m)	2 3/8 (2.2m)
54 (1.35)	1 1/2 (1.4m)	1 7/8 (1.7m)	1 7/8 (1.7m)	1 7/8 (1.7m)	2 (1.8M)	2 1/8 (1.9m)	2 1/8 (1.9m)
60 (1.50)	1 1/2 (1.4M)	1 5/8 (1.5M)	1 5/8 (1.5M)	1 5/8 (1.5M)	1 5/8 (1.5M)	1 5/8 (1.5M)	1 3/4 (1.6m)

#### Sizing Chart

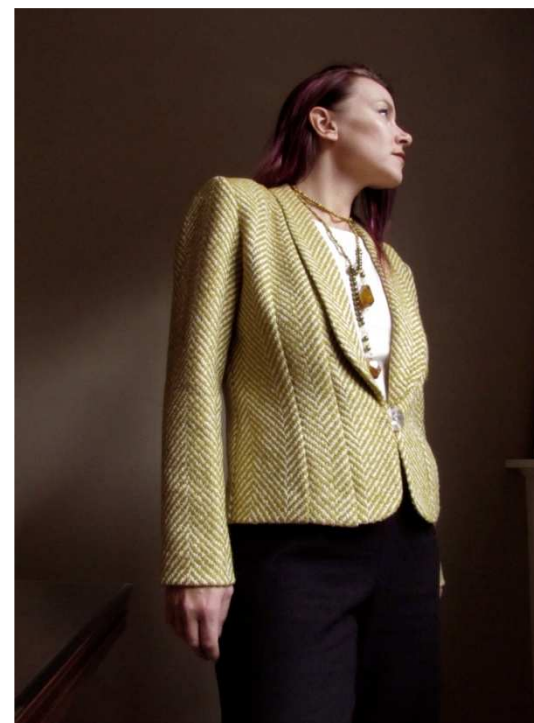
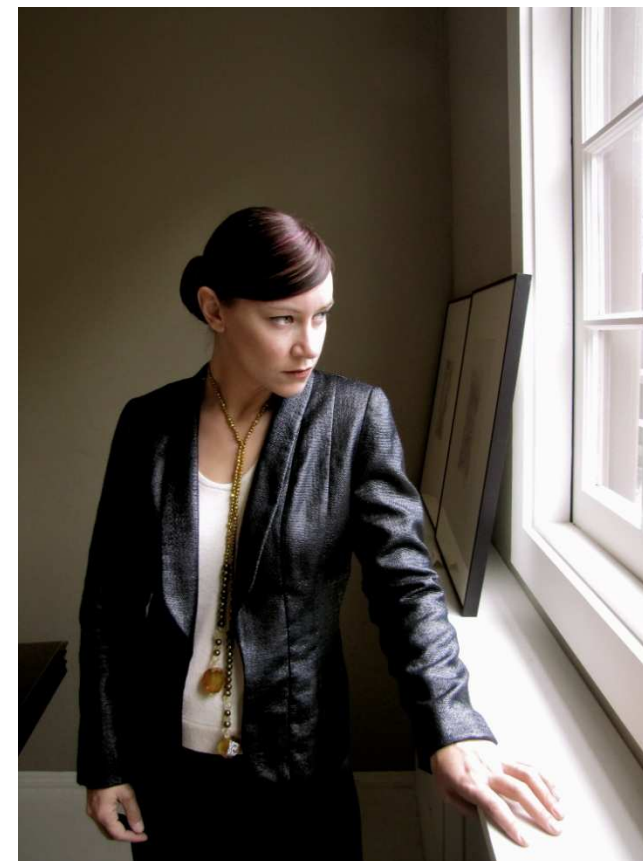
(Note: Measure pattern pieces before cutting to determine correct size)

	XXS	XS	S	M	L	XL	XXL
<b>Bust</b>	33 (84cm)	35 (89cm)	37 (94cm)	39 (99cm)	41 (104cm)	44 (112cm)	47 (119cm)
<b>Hip</b>	34 (86cm)	36 (91cm)	38 (96cm)	40 (102cm)	42 (107cm)	45 (115cm)	48 (122cm)

## Paris Jacket

No. 1004

Multi-sized Petit Through Plus



LOES HINSE  
studio