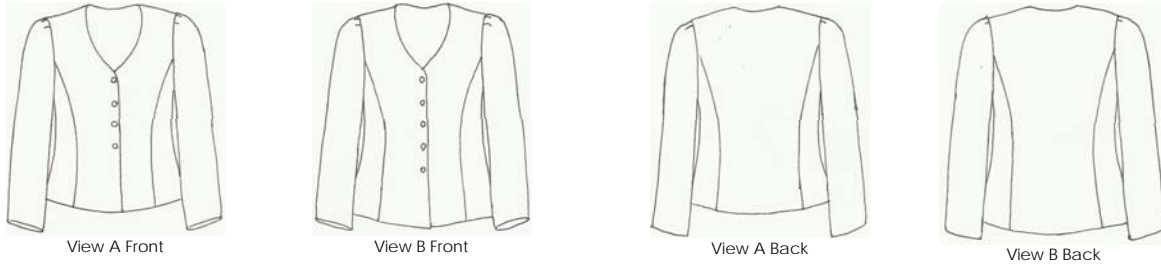


LOES HINSE patterns are based on the designs for her boutique in Carmel, California. Her concept reflects soft feminine shapes with simple lines that are easy to mix and match. Because of this concept, the patterns can be made in a variety of fabrics that can be used again and again. Loes' European training and years of experience working with a variety of women with different needs and lifestyles resulted in an understanding of timeless, yet modern clothing.



Description – Princess seam hip length jacket. Sleeve cap has three small darts and a slightly cut in armhole. Bust ease 2" and Hip ease 3". View B is 1 1/2" longer than view A.

Suggested Fabrics – Wool, linen, cotton, rayon, velvet, raw silk, microfiber, double knits, boucle and blends.

Notions – View A 4 buttons measuring 1 1/4". View B 5 buttons measuring 1 1/4". One pair of shoulder pads measuring 6"x 3 1/2"x 5/8". One 5" strip of Velcro.

Yardage Chart

Inches (m)	XXS	XS	S	M	L	XL	XXL
A 45 (1.15)	2 1/8 (1.9m)	2 1/8 (1.9m)	2 1/8 (1.9m)	2 1/4 (2.1m)	2 1/4 (2.1m)	2 1/4 (2.1m)	2 3/8 (2.2m)
A 54 (1.35)	1 1/2 (1.4m)	1 7/8 (1.7m)	1 7/8 (1.7m)	1 7/8 (1.7m)	2 (1.8m)	2 1/8 (1.9m)	2 1/8 (1.9m)
A 60 (1.50)	1 1/2 (1.4m)	1 5/8 (1.5m)	1 5/8 (1.5m)	1 5/8 (1.5m)	1 5/8 (1.5m)	1 5/8 (1.5m)	1 3/4 (1.5m)

Sizing Chart

(Note: Measure pattern pieces before cutting to determine correct size)

	XXS	XS	S	M	L	XL	XXL
Bust	33 (84cm)	35 (89cm)	37 (94cm)	39 (99cm)	41 (104cm)	44 (112cm)	47 (119cm)
Hip	34 (86cm)	36 (91cm)	38 (96cm)	40 (102cm)	42 (107cm)	45 (115cm)	48 (122cm)

LOES HINSE studio

Mallorca Jacket

No. 1005

Multisized Petite Through Plus

