

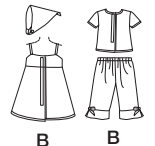
2458

29 PIECES



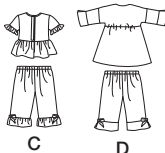
A

A



B

B



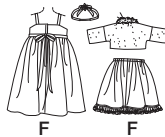
C

D



E

E



F

F

18" (45.5CM) DOLL CLOTHES

Fabrics: 45" (115cm) wide with nap such as Cotton and Cotton Blends, Broadcloth, Calico, Lightweight Denim, Pique. **F Dress** in Novelty Sheer Fabrics. **Jacket** in Low Pile Fur, Plush.

Notions: Thread. Look for Simplicity notions and Wrights® Trims.

A,B Sundress- ¾ yd. (0.40m)

Ribbon- ¾ yd. (0.60m) of ¼" to ¾" (6mm to 1cm) wide

Notions: 3½" (9cm) length of ¾" (1.5cm) wide Velcro®

A,B,C,E Top- ¾ yd. (0.30m)

C Contrast Ruffle- ¼ yd. (0.30m)

E Fur Trim- ¾ yd. (0.70m) of ½" (1.3cm) wide

Notions: 4½" (11.5cm) length of ¾" (1.5cm) wide Velcro®. **C:** 9" (23cm) length of ¼" to ¾" (6mm to 1cm) wide ribbon. **E:** One ¾" (1cm) decorative button, 10" (25.5cm) length of ¼" (3mm) wide soutache braid

A Shrug- ¼ yd. (0.30m) each of fabric and lining.

A,B,C,D,E Pants- ¾ yd. (0.40m)

A,B Contrast Band or C Contrast Ruffle- ¼ yd. (0.20m)

A,B,C,D Ribbon- ¾ yd. (0.60m) of ¼" to ¾" (6mm to 1cm) wide

Notions: 11" (28cm) length of ¾" (1cm) wide elastic. **E:** 12" (30.5cm) length of ¾" (1cm) wide flat lace

B Scarf - ¾ yd. (0.40m)

Notions: 2" (5cm) length of ¾" (1cm) wide elastic

D Bodice, Sleeve Bands and Skirt Facing- ¾ yd. (0.30m)

Contrast Sleeve and Skirt- ¾ yd. (0.30m)

Notions: 9" (23cm) length of ¼" to ¾" (6mm to 1cm) wide ribbon, 1" (2.5cm) of ¾" (1.5cm) wide Velcro®, 5" (12.5cm) length of ¾" (1cm) wide elastic

E Skirt- ¾ yd. (0.30m)

Ribbon- ¾ yd. (0.60m) of ½" (1.3cm) wide

Notions: 6" (15cm) length of ¾" (1cm) wide elastic

F Dress- ½ yd. (0.50m) each of sheer fabric and lining

Ribbon- 1¾ yd. (1.60m) of ½" (1.3cm) wide

Slip- ¾ yd. (0.30m)

Pregathered Lace- 1 yd. (0.90m) of 1" (2.5cm) wide

Jacket- ¾ yd. (0.30m) each of fabric and lining

Sheer Ribbon for Headband and Jacket Bow- 1½ yd. (1.00m) of ¾" (2cm) wide

Elastic- ½ yd. (0.50m) of ¾" (1cm) wide for slip and headband

Notions: **Dress:** 1½" (3.8cm) length of ¾" (1.5cm) wide Velcro®, five small sheer ribbon rosettes. **Jacket:** One ¾" (1.5cm) decorative button, one ¼" (2cm) square Velcro®, 12" (30.5cm) length marabou.

Headband: One 1¾" (4cm) sheer ribbon flower with pearl center

VÊTEMENTS DE POUPÉE DE 45.5CM

Tissus: en 115cm de large avec sens tels que Coton et Cotonnades, Popeline, Calicot, Calicot, lège, Piqué. **F Robe** en tissus transparents fantaisie et **Veste** en Fourrure à poil ras, Peluche.

Mercurie: Fil. Demandez la mercerie de Simplicity et les garnitures de Wrights® Trims.

A,B Robe bain de soleil - 0.40m

Ruban- 0.60m de 6mm à 1cm de large

Mercurie: un morceau Velcro® de 9cm de long et de 1.5cm de large

A,B,C,E Haut- 0.30m

C Volant contrastant - 0.30m

E Garniture de fourrure - 0.70m de 1.3cm de large

Mercurie: un morceau de Velcro® de 11.5cm de long et de 1.5cm de large. **C:** un morceau de ruban de 23cm et de 6mm à 1cm de large. **E:** un bouton décoratif de 1cm, un morceau de soutache de 25.5cm de long et de 3mm de large.

A Veste aux épaules - 0.30m de tissu et de doublure.

A,B,C,D,E Pantalon - 0.40m

A,B Bande Contrastante ou C Volant Contrastant 0.20m

A,B,C,D Ruban- 0.60m de 6mm à 1cm de large

Mercurie: un morceau d'élastique de 28cm et de 1cm de large. **E:** un morceau de dentelle plate de 30.5cm de long et de 1cm de large

B Foulard: 0.40m

Mercurie: un morceau d'élastique de 5cm et de 1cm de large

D Corsage, Bandes des Manches et Parementure de la Jupe - 0.30m

Manches et Jupe Contrastantes- 0.30m

Mercurie: Un morceau de ruban de 23cm de 6mm à 1cm de large, un morceau de Velcro® de 2.5cm de long et de 1.5cm de large, un morceau d'élastique de 12.5cm de long et de 1cm de large.

E Jupe- 0.30m

Ruban- 0.60m de 1.3cm de large

Mercurie: un morceau d'élastique de 15cm de long et de 1cm de large

F Robe- 0.50m de tissu transparent et de doublure

Ruban- 1.60m de 1.3cm de large

Jupon- 0.30m

Dentelle préfroncée- 0.90m de 2.5cm de large

Veste- 0.30m de tissu et de doublure

Ruban transparent pour le Serre-tête et le Nœud de la Veste- 1.00m de 2cm de large

Élastique - 0.50m de 1cm de large pour le jupon et le serre-tête

Mercurie: **Robe:** un morceau de Velcro® de 3.8cm de long et de 1.5cm de large, cinq rosettes en ruban transparent. **Veste:** un bouton décoratif de 1.5cm, un carré de Velcro® de 2cm, un morceau de marabout de 30.5cm de long.

Serre-tête: une fleur en ruban transparent de 4cm avec perle au milieu.