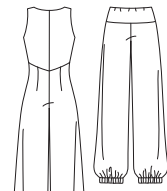


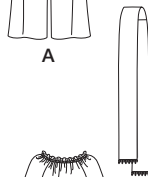
2476

22 PIECES/PIEZAS

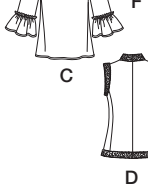
Métrages et Instructions de couture en Français à l'intérieur de l'enveloppe.



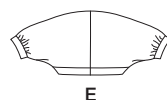
B



A



F



E

MISSES' JUMPSUIT, PANTS, TOP, REVERSIBLE VEST, SHRUG AND SCARF

Fabrics: A,B,C,F in Charmeuse, Challis, Crepe Back Satin, Crinkled Gauze, Double Georgette, Soft Lightweight Linen and Linen Blends, Matte Jerseys, Stretch Velvet, Two Way Stretch. D,E in Brocade, Satin, Shantung, Taffeta, Velvet. D Bands and Reversible side in Synthetic Fur. Extra fabric needed to match plaids, stripes or one-way design fabrics.

Notions: Thread. A: One 16" invisible zipper. C: One pkg. of 1/4" wide elastic.

Look for Simplicity notions and Wrights® Trims.

BODY MEASUREMENTS (For Sizing Help Visit www.simplicity.com)

Bust	29½	30½	31½	32½	34	36	38	40	42	In
Waist	22	23	24	25	26½	28	30	32	34	"
Hip-9" below waist	31½	32½	33½	34½	36	38	40	42	44	"
Back-neck to waist	15¼	15½	15¾	16	16¼	16½	16¾	17	17¼	"
Pattern Size	4	6	8	10	12	14	16	18	20	
Sizes-European	30	32	34	36	38	40	42	44	46	

A Jumpsuit

45***	2%	2%	2%	2%	3%	3%	3%	3%	3%	Yd
60***	1%	1%	2	2	2%	2%	2%	2%	2%	"

Lining ¾ yd. of 45**

B Pants

45***	2%	2%	2%	2%	2%	2%	2%	3	3	Yd
60***	1%	1%	1%	1%	1%	2%	2%	2%	2%	"

Elastic ¾ yd. of 1" wide

C Top

45***	2%	2%	2%	2%	2%	2%	2%	2%	2%	Yd
60***	1%	1%	1%	1%	1%	1%	1%	1%	1%	"

Ribbon or Middy Braid (opt.) 1 yd. of 5/8" wide

D Vest- reversible

45***	1%	1%	1%	1%	1%	1%	1%	1%	1%	Yd
60***	¾	¾	¾	¾	¾	¾	¾	¾	1	"

Reversible Side and Bands

60***	1%	1%	1%	1%	1%	1%	1%	1%	1%	Yd
-------	----	----	----	----	----	----	----	----	----	----

E Shrug 1¼ yd. of 45" or 60***

F Scarf ¾ yd. of 45" or 60***; Ribbon with Bead Fringe ¾ yd. of 1" wide

FINISHED GARMENT MEASUREMENTS (Includes Design and Wearing EASE)

A Bust	32	33	34	35	36½	38½	40½	42½	44½	In
C Bust	38½	39½	40½	41½	43	45	47	49	51	"
A Hip	37½	38½	39½	40½	42	44	46	48	50	"
B Hip	35½	36½	37½	38½	40	41½	43½	45½	47½	"

Finished back length from base of neck:

A Jumpsuit	56½	57	57½	57¾	57¾	58	58½	58½	58¾	In
B Pants Side Length	37½	37½	37¾	38	38½	38½	38¾	39	39½	"
A Jumpsuit Leg Width	20%	21%	22%	23	23%	24%	25%	26	26%	"

*without nap **with nap ***with or without nap

JEUNE FEMME: COMBINAISON, PANTALON, HAUT, GILET REVERSIBLE, VESTE TRÈS COURTE ET ÉCHARPE
Tissus: A,B,C,F en Charmeuse, Etamine, Crêpe de Satin, Gaze cloquée, Crêpe Georgette double, Lin et mélanges de lin souples et légers, Jersey mat, Velours extensible, Jersey extensible dans les deux sens. D,E en Brocat, Satin, Shantung, Taffetas, Velours. D Bandes et côté doublure en Fourrure Synthétique. Prévoyez davantage de tissu pour raccorder les écosais, rayures ou motifs unidirectionnels.

Merceria: Fil. A: Une glissière invisible de 40cm. C: Un paquet d'élastique de 6mm de large. D,Bandez la mercerie de Simplicity et les garnitures de Wrights® Trims.

SEÑORITAS: COMBINACIÓN, PANTALÓN, BLUSA, CHALECO REVERSIBLE, CHAQUETA MUY CORTA Y BUFANDA

Telas: A,B,C,F in Charmeuse, Chalí, Crepé de Satén, Gasa arrugada, Crepé Georgette doble, Lino y mezclas de lino suaves y ligeros, Mallas mates, Terciopelo estirable, Mallas estrables en dos sentidos. D,E en Brocado, Satén, Shantung, Tafetán, Terciopelo. D Bandas y lado del forro en Piel sintética. Se necesita tela adicional para casar cuadros, rayas o telas estampadas en una dirección.

Merceria: Hilo. A: Una cremallera invisible de 40cm. C: Un paquete de elástico de 6mm de ancho. Pida la mercería de Simplicity y los adornos de Wrights® Trims.

MESURES NORMALISEES/MEDIDAS DEL CUERPO

Poitrine/Busto	75	78	80	83	87	92	97	102	107	cm
Taille/Cintura	56	58	61	64	67	71	76	81	87	"
Hanches (23cm au-dessous de la taille)/Caderas (23cm abajo de la cintura)	80	83	85	88	92	97	102	107	112	cm

Dos (encolure à taille)/Espalda (escote a cintura)

	38.5	39.5	40	40.5	41.5	42	42.5	43	44	cm
--	------	------	----	------	------	----	------	----	----	----

Tailles / Tallas

Tailles-Françaises	4	6	8	10	12	14	16	18	20	
Tallas-Europeas	32	34	36	38	40	42	44	46	48	

A Combinasion / A Combinación

115cm**	2.40	2.50	2.50	2.50	2.90	2.90	2.90	2.90	2.90	m
150cm**	1.70	1.80	1.80	1.80	2.20	2.20	2.20	2.20	2.40	"

Doublure 0.80m de 115cm* / Forro 0.80m de 115cm*

B Pantalon/ B Pantalón

115cm**	2.30	2.40	2.50	2.50	2.60	2.60	2.60	2.70	2.80	m
150cm**	1.50	1.60	1.60	1.60	1.60	2.10	2.10	2.20	2.30	"

Elastique 0.80m de 2.5cm de large / Elástico 0.80m de 2.5cm de ancho

C Haut/ C Blusa

115cm**	1.90	1.90	2.00	2.00	2.10	2.20	2.40	2.60	2.60	m
150cm**	1.50	1.50	1.50	1.60	1.60	1.60	1.60	1.60	1.70	"

Ruban ou soutache très fine (facult.) 0.90m de 3mm de large

Cinta o galón muy fina (opcional) 0.90m de 3mm de ancho

D Gilet- réversible/ D Chaleco - reversible

115cm**	1.20	1.20	1.20	1.20	1.20	1.20	1.20	1.30	1.30	m
150cm**	0.80	0.80	0.80	0.80	0.80	0.80	0.80	0.80	0.90	"

Côté et bandes Réversibles/ Lado y bandas reversible

150cm**	1.10	1.10	1.20	1.30	1.30	1.30	1.30	1.30	1.30	m
---------	------	------	------	------	------	------	------	------	------	---

E Veste très courte-1.10m de 115cm ou 150cm**

E Chaqueta muy corta-1.10m de 115cm o 150cm**

F Echarpe- 0.60m de 115cm ou 150cm**; Ruban avec frange perlée- 0.60m de 2.8cm de large

F Bufanda- 0.60m de 115cm o 150cm**; Cinta con flequillos de perlas- 0.60m de 2.8cm de ancho

*sans sens **avec sens ***avec ou sans sens

*sin pelusa **con pelusa ***con o sin pelusa

To be used for individual private home use only and not for commercial or manufacturing purposes.