

2498

20 PIECES/PIEZAS

Métrages et Instructions de couture en Français à l'intérieur de l'enveloppe.

MEASURES / MISS PETITE DRESS IN THREE LENGTHS WITH BODICE VARIATIONS

Fabrics: Silks and Silk Types, Charmeuse, Challis, Crepe, Crepe Back Satin, Laundered Silks-Rayons, Sandwashed Silk, Sueded Silks/Rayons, Satin, Taffeta. B.D Bodice in Lace, Chiffon, Georgette, Double Georgette, Novelty Sheer Fabrics. A,C also in Soft Lightweight Linen and Linen Blends. Extra fabric needed to match plaids, stripes or one-way design fabrics.

Notions: Thread, one 16" zipper, hook and eye. **B:** One 1" buckle. Look for Simplicity notions and Wrights® Trims.

BODY MEASUREMENTS (For Sizing Help Visit www.simplicity.com)

Bust	30½	31½	32½	34	36	38	40	42	44	In
Waist	23	24	25	26½	28	30	32	34	37	"
Hip-9" below waist	32½	33½	34½	36	38	40	42	44	46	"
Back-neck to waist	15½	15½	16	16½	16½	16½	17	17½	17½	"
Pattern Size	6	8	10	12	14	16	18	20	22	
Sizes-European	32	34	36	38	40	42	44	46	48	

A Dress

45***	3%	3%	3%	3%	3%	4%	4%	4%	4%	Yd
60***	3	3	3	3%	3%	3%	3%	3%	3%	"

B Dress

45***	2%	2%	2%	2%	2%	2%	2%	2%	2%	Yd
60***	1%	1%	1%	1%	1%	1%	1%	1%	1%	"

Contrast

45" or 60***	1%	1%	1%	1%	1%	1%	1%	1%	1%	Yd
--------------	----	----	----	----	----	----	----	----	----	----

C Dress

45***	3	3	3	3%	3%	3%	3%	3%	3%	Yd
60***	2%	2%	2%	2%	2%	2%	2%	2%	2%	"

Contrast

45" or 60***	%	½	½	½	½	%	%	%	%	Yd
--------------	---	---	---	---	---	---	---	---	---	----

D Dress

45***	4%	4%	4%	4%	4%	4%	4%	4%	5	Yd
60***	3%	3%	3%	3%	3%	3%	3%	3%	3%	"

Contrast

45" or 60***	%	%	%	%	%	%	%	%	1	Yd
--------------	---	---	---	---	---	---	---	---	---	----

B,C,D Inner Bodice Lining ½ yd. of 45**

FINISHED GARMENT MEASUREMENTS (Includes Design and Wearing EASE)

A Bust	33	34	35	36½	38½	40½	42½	44½	46½	In
B,C,D Bust	32	33	34	35½	37½	39½	41½	43½	45½	"
Finished back length from base of neck:										
A	48½	48¾	49	49½	49½	49½	50	50½	50½	In
B,C	38½	38¾	39	39½	39½	39½	40	40½	40½	"
D	56½	56¾	57	57½	57½	57½	58	58½	58½	"

*without nap **with nap ***with or without nap

JEUNE FEMME / PETITE JEUNE FEMME: ROBE EN TRES LONGUEURS AVEC CHOIX DE CORPS
Tissus: Soies et tissus soyeux, Charmeuse, Etamine, Crêpe, Crêpe de Satin, Soies-Rayonnes Prêlavées, Soie lavée au sable, Soies-Rayonnes Suédées, Satin, Taffetas. B.D Corsage en dentelle, Chiffon, Crêpe Georgette, Crêpe Georgette Double. Tissus fantaisie transparents. A,C aussi en Lin et mélanges de lin légers et souples. Prévoyez davantage de tissu pour raccorder les écosais, rayures ou motifs unidirectionnels.

Mercerie: Fil, una cremallera de 40cm, un corchete. **B:** Une boucle de 2.5cm. Demandez la mercerie de Simplicity et les garnitures de Wrights® Trims.

SEÑORITAS / SEÑORITAS PEQUEÑAS: VESTIDO EN TRES LARGOS CON DIFERENTES CORPIÑOS

Telas: Sedas y telas sedosas, Charmeuse, Chali, Crepê, Crêpê de satên, Rayones/Sedas lavadas, Seda lavada con arena, Rayones-Sedas agamuzados, Satên, Tafetân. B.D Corpiño en Encaje, Chiffon, Crepê Georgette, Crepê Georgette Doble, Telas fantasia transparentes. A,C también en Lino y mezclas de lino suaves y ligeros. Se necesita tela adicional para casar cuadros, rayas o telas estampadas en una dirección.

Mercería: Hilo, una cremallera de 40cm, un cogchete. **B:** Una hebilla de 2.5cm buckle. Pida la mercería de Simplicity y los adornos de Wrights® Trims.

MESURES NORMALISEES / MEDIDAS DEL CUERPO

Poirtrine / Busto	78	80	83	87	92	97	102	107	112	cm
Taille / Cintura	58	61	64	67	71	76	81	87	94	"
Hanches (23cm au-dessous de la taille) / Caderas (23cm abajo de la cintura)	83	85	88	92	97	102	107	112	117	cm

Dos (encolure à taille) / Espalda (escote a cintura)

	39.5	40	40.5	41.5	42	42.5	43	44	44	cm
--	------	----	------	------	----	------	----	----	----	----

Tailles / Tallas

	6	8	10	12	14	16	18	20	22	
Tailles-Françaises	34	36	38	40	42	44	46	48	50	
Tallas-Europeas	32	34	36	38	40	42	44	46	48	

A Robe / A Vestido

115cm**	2.90	2.90	3.00	3.10	3.40	3.80	3.80	3.90	3.90	m
150cm**	2.70	2.80	2.80	2.80	2.80	2.90	2.90	2.90	2.90	"

B Robe / B Vestido

115cm**	2.10	2.10	2.20	2.20	2.20	2.20	2.30	2.30	2.30	m
150cm**	1.60	1.60	1.60	1.60	1.60	1.60	1.60	1.60	1.70	"

Partie Contrastante / Parte Contrastante

115cm / 150cm**	1.00	1.00	1.00	1.00	1.10	1.20	1.30	1.60	1.80	m
-----------------	------	------	------	------	------	------	------	------	------	---

C Robe / C Vestido

115cm**	2.70	2.70	2.80	2.90	3.00	3.00	3.10	3.20	3.40	m
150cm**	1.90	2.00	2.10	2.10	2.10	2.20	2.20	2.20	2.30	"

Partie Contrastante / Parte Contrastante

115cm / 150cm**	0.40	0.40	0.40	0.40	0.50	0.50	0.50	0.60	0.60	m
-----------------	------	------	------	------	------	------	------	------	------	---

D Robe / D Vestido

115cm**	4.00	4.00	4.00	4.10	4.10	4.20	4.30	4.50	4.60	m
150cm**	3.00	3.00	3.00	3.10	3.10	3.10	3.10	3.20	3.20	"

Partie Contrastante / Parte Contrastante

115cm / 150cm**	0.60	0.60	0.60	0.60	0.70	0.80	0.80	0.80	0.90	m
-----------------	------	------	------	------	------	------	------	------	------	---

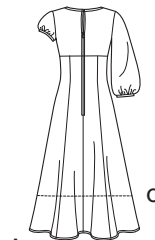
B,C,D Doublure du corsage intérieur 0.40m de 115cm*

B,C,D Forro del corpiño interior- 0.40m de 115cm*

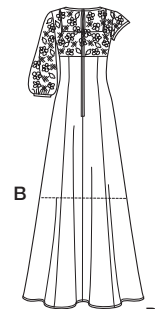
*sans sens **avec sens ***avec ou sans sens

*sin pelusa **con pelusa ***con o sin pelusa

To be used for individual private home use only and not for commercial or manufacturing purposes.



A



B

C

D