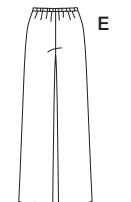
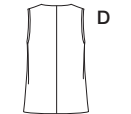
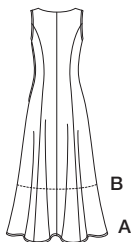


2539

18 PIECES/PIEZAS

Métrages et Instructions de couture en Français à l'intérieur de l'enveloppe.



MISSES/WOMEN'S JUMPER IN TWO LENGTHS, PANTS AND JACKET OR VEST

Tissus: Piqué, Popeline, Twill, Sateen, Challis, Crepe, Silk Linen, Sueded Silks/Rayons, Soft Lightweight Linen and Linen Blends, Lightweight Wool and Wool Blends. C,D also in Brocade, Taffeta. Extra fabric needed to match plaids, stripes or one-way design fabrics.

Notions: Thread. **A,B:** One 14" zipper. **C,D:** Two 1" buttons. Look for Simplicity notions and Wrights® Trims.

BODY MEASUREMENTS (For Sizing Help Visit www.simplicity.com)

Bust	32½	34	36	38	40	42	44	46	48	50	In
Waist	25	26½	28	30	32	35	37	39	41½	44	"
Hip-9" below waist	34½	36	38	40	42	44	46	48	50	52	In
Back-neck to waist	16	16½	16½	16½	17	17½	17½	17½	17½	17½	In

Pattern Size	10	12	14	16	18	20W	22W	24W	26W	28W
Sizes-European	36	38	40	42	44	46	48	50	52	54

A Jumper

45***	4%	4%	4%	4%	4%	4%	4%	5	5%	5%	Yd
60***	3%	3%	3%	3%	3%	3%	3%	3%	3%	3%	"

B Jumper

45***	2½	2½	2½	2½	2½	3%	3%	3%	3%	3%	Yd
60***	2%	2%	2%	2%	2%	2%	2%	2%	2%	2%	"

A,B Interfacing- ½ yd. of 20" to 25" lightweight fusible

C Jacket

45***	2%	2%	2%	2%	2%	3%	3%	3%	3%	3%	Yd
60***	2%	2%	2%	2%	2%	2%	2%	2%	2%	2%	"

D Vest

45***	1%	1%	1%	1%	1%	2%	2%	2%	2%	2%	Yd
60***	1%	1%	1%	1%	1%	1%	1%	1%	2	2	"

C,D Interfacing- 1½ yd. of 20" to 25" lightweight fusible

E Pants

45***	2%	2%	2%	2%	2%	2%	2%	2%	2%	2%	Yd
60***	1%	1%	1%	1%	1%	1%	1%	1%	2%	2%	"

Elastic- 1 yd. for misses', 1½ yd. for women's of ½" wide

FINISHED GARMENT MEASUREMENTS (Includes Design and Wearing EASE)

A,B Bust	35½	37	39	41	43	45	47	49	51	53	In
C,D Bust	36	37½	39½	41½	43½	45½	47½	49½	51½	53½	"
E Hip	37	38½	40	42	44	47	49	51	53	55	"

Finished back length from base of neck:

A Jumper	48	48½	48½	48½	49	51½	51½	51½	51½	52	In
B Jumper	39	39½	39½	39½	40	42½	42½	42½	42½	43	"
E Pants Side Length	41	41½	41½	41½	42	41½	42	42½	42½	42½	In
A Jumper Width	88½	90	92	94	96	107	109	111	113	115	"
B Jumper Width	66	67½	69½	71½	73½	84	86	88	90	92	"
E Pants Leg Width	18	18½	19½	20½	21	21½	22	22½	23½	24½	In

*without nap **with nap ***with or without nap

JEUNE FEMME / FEMME: CHASUBLE EN DEUX LONGUEURS, PANTALON ET VESTE OU GILET

Tissus: Piqué, Popeline fine, Twill, Satinette, Etamine, Crêpe, Mélange Soie et Lin, Soies/Rayonnes Suédées, Lin et Mélanges de Lin souples et légers, Laine et Lainages légers. C,D en Brocart, Taffetas aussi.

Prévoyez davantage de tissu pour raccorder les écosais, les rayures ou les motifs unidirectionnels.

Merceria: Fil. **A,B:** une glissière de 35cm. **C,D:** Deux boutons de 2.5cm. Demandez la mercerie de Simplicity et les garnitures de Wrights® Trims.

SEÑORITAS/SEÑORAS: JUMPER EN DOS LARGOS, PANTALÓN Y CHAQUETA O CHALECO

Telas: Piqué, Popelina fina, Twill, Satén de Algodón, Chali, Crepé, Mezcla de Seda y Lino, Sedas/Rayones agamuzados, Lino y Mezclas de Lino suave y ligero, Sedas/Rayones, Lana y Mezclas de Lanasy ligeras. C,D en Brocado, Tafetán también. Se necesita tela adicional para casar cuadros, rayas o telas estampadas en una dirección.

Merceria: Hilo. **A,B:** una cremallera de 35cm. **C,D:** dos botones de 2.5cm. Pida la mercería de Simplicity y los adornos de Wrights® Trims.

MESURES NORMALISEES / MEDIDAS DEL CUERPO

Poitrine/Busto	83	87	92	97	102	107	112	117	122	127	cm
Taille/Cintura	64	67	71	76	81	89	94	99	105	112	"

Hanches (23cm au-dessous de la taille)/Caderas (23cm abajo de la cintura)

	88	92	97	102	107	112	117	122	127	132	cm
--	----	----	----	-----	-----	-----	-----	-----	-----	-----	----

Dos (encolure à taille)/Espalda (escote a cintura)

	40,5	41,5	42	42,5	43	44	44	44,5	45	45	cm
--	------	------	----	------	----	----	----	------	----	----	----

Tailles / Tallas	10	12	14	16	18	20W	22W	24W	26W	28W
Tailles-Françaises	38	40	42	44	46	48	50	52	54	56
Tallas-Europeas	36	38	40	42	44	46	48	50	52	54

A Chasuble / A Jumper

115cm**	4.00	4.00	4.00	4.00	4.10	4.30	4.40	4.60	4.60	4.80	m
150cm**	2.80	2.80	2.80	2.90	2.90	3.00	3.00	3.10	3.10	3.20	"

B Chasuble / B Jumper

115cm**	2.20	2.30	2.30	2.30	2.30	3.30	3.30	3.30	3.30	3.30	m
150cm**	1.90	2.00	2.00	2.10	2.10	2.30	2.30	2.30	2.30	2.40	"

A,B Entoilage - 0.50m de 51cm a 64cm, léger, thermocollant/ **Entretela -** 0.50m de 51cm a 64cm, ligera, adhesiva.

C Veste/ C Chaqueta

115cm**	2.50	2.50	2.50	2.60	2.60	2.90	2.90	3.00	3.00	3.00	m
150cm**	2.10	2.10	2.10	2.20	2.20	2.40	2.40	2.40	2.40	2.50	"

D Gilet/ D Chaleco

115cm**	1.60	1.70	1.70	1.70	1.70	2.30	2.30	2.30	2.30	2.30	m
150cm**	1.20	1.30	1.30	1.40	1.40	1.70	1.70	1.70	1.80	1.80	"

C,D Entoilage - 1.00m de 51cm a 64cm, léger, thermocollant/ **C,D Entretela -** 1.00m de 51cm a 64cm, ligera, adhesiva.

E Pantalon/ E Pantalón

115cm**	2.20	2.40	2.40	2.40	2.40	2.50	2.50	2.50	2.50	2.50	m
150cm**	1.30	1.40	2.10	2.10	2.10	2.10	2.20	2.40	2.50	2.50	"

Elastique - 1.00m pour jeune femme, 1.30m pour femme, de 1.3cm de large / **Élastique -** 1.00m para señoritas, 1.30m para señoras, de 1.3cm de ancho

*sans sens **avec sens ***avec ou sans sens

*sin pelusa **con pelusa ***con o sin pelusa

To be used for individual private home use only and not for commercial or manufacturing purposes.