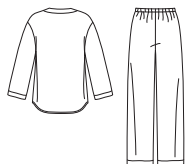


2541

Instructions in English
Instructions en Français
Instrucciones en Español



MISSES', MEN'S, OR TEENS' TOP AND PANTS

Fabrics: Cottons, Flannels.

Notions: Thread. Three ¾" buttons.

SIZE	XS	S	M	L	XL	
BODY MEASUREMENTS						
Chest	30-32	34-36	38-40	42-44	46-48	In
Hip	31-32½	35-37	39-41	43-45	47-49	"
Top						
45***	2½	2½	2½	2½	3	Yd
60***	2	2	2	2	2½	"
Interfacing - ¾ yd. of 20" to 25" lightweight fusible						
Pants						
45***	2½	2¾	2¾	2¾	2¾	Yd
60***	1½	2	2	2	2¾	"
Elastic - 1" wide - 1¾ yd.						
FINISHED GARMENT MEASUREMENTS						
Top Chest / Bust						
	38	42	46	50	54	In
Pants Hip						
	35	39	43	47	51	In
Pants Side Length						
	43	43½	44	44½	45	In
Pants Leg Width						
	17	19	21	23	25	In

*without nap, **with nap, ***with or without nap

JEUNE FEMME, HOMME ET ADOLESCENT: HAUT ET PANTALON

Tissus: Cotons, Flanelle.

Mercerie: Fil. Trois boutons de 1.5cm.

TAILLE	TP	P	M	G	TG	
MESURES NORMALISEES						
Poitrine	76-81	87-92	97-102	107-112	117-122cm	
Hanches	79-83	89-94	99-104	109-114	119-124 "	
Haut						
115cm**	2.30	2.30	2.40	2.40	2.70	m
150cm**	1.80	1.80	1.80	1.90	1.90	"
Entoilage - 0.70m de 51cm à 64cm léger thermocollant						
Pantalón						
115cm**	2.20	2.50	2.60	2.60	2.60	m
150cm**	1.30	1.80	2.20	2.20	2.50	"
Elastique - 2.5cm de large - 1.30m.						
MESURES DU VETEMENT FINI						
Haut Poitrine						
	96.5	107	117	127	138	cm
Pantalón Hanches						
	89	99	110	120	130	cm
Pantalón Longueur du côté						
	110	111	112	113	115	cm
Pantalón Largeur de la jambe						
	43	48.5	53.5	58.5	63.5	cm

*sans sens, **avec sens, ***avec ou sans sens

SEÑORITAS, HOMBRES Y ADOLESCENTES: BLUSA Y PANTALÓN

Telas: Algodóns, Franela.

Mercería: Hilo. Tres botones de 1.5cm.

TALLAS	XP	P	M	G	XG	
MEDIDAS DEL CUERPO						
Busto	76-81	87-92	97-102	107-112	117-122cm	
Caderas	79-83	89-94	99-104	109-114	119-124 "	
Blusa						
115cm**	2.30	2.30	2.40	2.40	2.70	m
150cm**	1.80	1.80	1.80	1.90	1.90	"
Entretela - 0.70m de 51cm a 64cm ligera adhesiva						
Pantalón						
115cm**	2.20	2.50	2.60	2.60	2.60	m
150cm**	1.30	1.80	2.20	2.20	2.50	"
Elástico - 2.5cm de ancho - 1.30m.						
MEDIDAS DE LA PRENDA TERMINADA						
Blusa Pecho / Busto						
	96.5	107	117	127	138	cm
Caderas de Pantalón						
	89	99	110	120	130	cm
Largo del lado del Pantalón						
	110	111	112	113	115	cm
Ancho de la pierna del Pantalón						
	43	48.5	53.5	58.5	63.5	cm

*sin pelusa, **con pelusa, ***con o sin pelusas

To be used for individual private home use only and not for commercial or manufacturing purposes.