

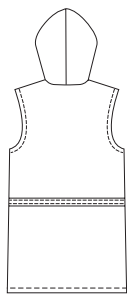
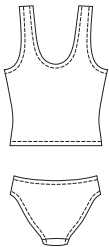


Misses' tankini and cover-up. Top has shelf bra lining with elastic under bust, and armholes and neckline are finished with elastic. Panty has high cut leg openings, lined front, and waist and leg openings are finished with elastic. Sleeveless cover-up has extended shoulders, hood, casing with ties at waist, one snap closure at bust and patch pockets.



TANKINI Back

COVER-UP Back



ACTIVE & SWIMWEAR

KWIK•SEW®
2775 price

MISSES' TANKINI & COVER-UP
 Sizes: XS-S-M-L-XL

TANKINI DESIGNED FOR TWO-WAY STRETCH FABRICS WITH 75% STRETCH
 Suggested Fabrics: Swimwear fabric with spandex Lycra®
COVER-UP DESIGNED FOR LIGHTWEIGHT WOVEN AND KNIT FABRICS
 Suggested Fabrics: Gauze, challis, sheers, lace, Lycra® sheer

Size	XS	S	M	L	XL	
Finished Length at Center Back from Natural Neckline						
Tankini Top	16 3/4 (42)	17 1/2 (44)	18 1/4 (46)	19 (48)	19 1/2 (49)	" (cm)
Cover-Up	29 1/2 (75)	30 1/2 (77)	31 1/2 (80)	32 3/4 (83)	33 1/2 (85)	" (cm)
Material Required: Fabric requirement allows for nap, one-way design or shading. Extra fabric may be needed to match design or for shrinkage.						
Fabric 60" (152 cm) Wide						
Tankini	7/8 (0.80)	1 (0.95)	1 (0.95)	1 1/8 (1.05)	1 1/8 (1.05)	yd (m)
Cover-Up	1 3/8 (1.30)	1 1/2 (1.40)	1 1/2 (1.40)	1 3/4 (1.60)	1 7/8 (1.75)	yd (m)
Fabric 45" (115 cm) Wide						
Tankini	1 (0.95)	1 1/8 (1.05)	1 1/8 (1.05)	1 1/4 (1.15)	1 1/4 (1.15)	yd (m)
Cover-Up	2 1/4 (2.10)	2 1/4 (2.10)	2 3/8 (2.20)	2 3/8 (2.20)	2 1/2 (2.30)	yd (m)
Swimwear Lining 45" (115 cm) or 60" (152 cm) Wide						
Tankini	5/8 (0.60)	5/8 (0.60)	5/8 (0.60)	3/4 (0.70)	3/4 (0.70)	yd (m)
Notions: Thread. TANKINI: 3/4" (2 cm) wide elastic - 1/2 yd (0.50 m) for sizes XS-S-M-L; 5/8 yd (0.60 m) for size XL, 3/8" (10 mm) wide swimwear elastic - 4 1/2 yd (4.15 m) for sizes XS-S-M; 5 1/8 yd (4.70 m) for sizes L-XL. COVER-UP: One sew on snap.						