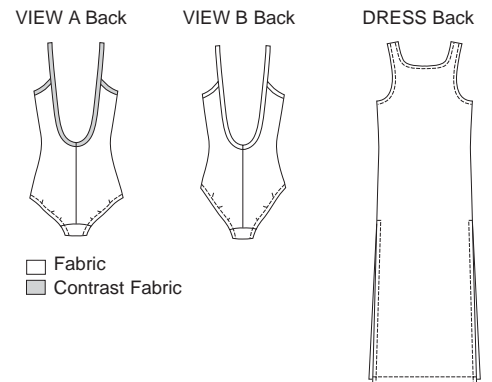


Misses' swimsuits and tank dress. swimsuit has shelf bra lining with elastic, lined crotch, neckline binding and shoulder straps in one piece with elastic, and leg openings are finished with elastic. View A has regular cut leg openings and contrast binding and shoulder straps. View B has high cut leg openings. Tank dress has neckline and armholes finished with narrow hems and high side slits.



**KWIK-SEW®**  
price **2869**

**DESIGNED FOR TWO-WAY STRETCH FABRIC WITH 75% STRETCH**

Suggested Fabrics: Swimwear fabrics with spandex Lycra®

Dress designed for stretch knits only with 20% stretch across the grain

Suggested Fabrics: Single knit, interlock, mesh, Lycra® sheer

**MISSSES' SWIMSUITS & DRESS**

Sizes: XS-S-M-L-XL

Size	XS	S	M	L	XL
<b>Finished Length of Dress from Waist - 36" (91 cm) All Sizes</b>					
<b>Material Required:</b> Fabric requirement allows for nap, one-way design or shading. Extra fabric may be needed to match design or for shrinkage.					
<b>Fabric 60" (152 cm) Wide</b>					
View A	5/8 (0.60)	5/8 (0.60)	5/8 (0.60)	5/8 (0.60)	3/4 (0.70)
Contrast	1/8 (0.15)	1/8 (0.15)	1/8 (0.15)	1/8 (0.15)	1/8 (0.15)
View B	5/8 (0.60)	5/8 (0.60)	3/4 (0.70)	3/4 (0.70)	3/4 (0.70)
Dress	1 5/8 (1.50)	1 5/8 (1.50)	1 5/8 (1.50)	1 5/8 (1.50)	3 1/4 (3.00)
<b>Fabric 45" (115 cm) Wide</b>					
View A	5/8 (0.60)	5/8 (0.60)	3/4 (0.70)	3/4 (0.70)	3/4 (0.70)
View B	1 3/8 (1.30)	1 1/2 (1.40)	1 5/8 (1.50)	1 5/8 (1.50)	1 3/4 (1.60)
<b>Contrast Fabric 4" (10 cm) Wide (Minimum Width)</b>					
View A	1 3/8 (1.30)	1 1/2 (1.40)	1 5/8 (1.50)	1 5/8 (1.50)	1 3/4 (1.60)
<b>Swimwear Lining 16" (40 cm) Wide (Minimum Width)</b>					
View A or B	1/2 (0.50)	5/8 (0.60)	5/8 (0.60)	3/4 (0.70)	3/4 (0.70)

**Notions:** Thread. Swimsuit VIEW A or B: 3/4" (2 cm) wide swimwear elastic - 1/2 yd (0.50 m) for sizes XS - S - M; 5/8 yd (0.60 m) for sizes L - XL, 3/8" (1 cm) wide swimwear elastic - 3 1/2 yd (3.20 m) for sizes XS - S - M; 4 yd (3.70 m) for sizes L - XL.