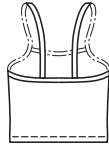




Women's pants and tops. Very close fitting pull-on pants have slightly flared legs in two lengths and wide waistband with narrow elastic. View A camisole has shelf bra lining and elastic at top edge and shoulder straps. View B top has V-neckline and armholes finished with self-fabric bands.

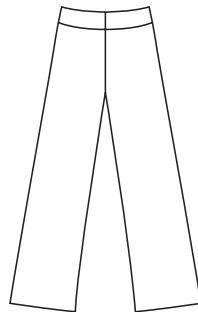
TOP VIEW A Back



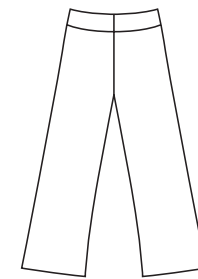
TOP VIEW B Back



PANTS VIEW A Back



PANTS VIEW B Back



PLUS SIZE

KWIK•SEW®
3277 price

PLUS SIZES

KWIK & EASY

WOMEN'S PANTS & TOPS
Sizes: 1X-2X-3X-4X

DESIGNED FOR TWO-WAY STRETCH FABRIC WITH 75% STRETCH
Suggested Fabrics: Cotton Lycra®, nylon Lycra®, rayon Lycra®, swimwear fabric

Size	1X	2X	3X	4X	
Finished Length of Top from Natural Neckline					
View A	21 (54)	21 1/2 (55)	22 1/2 (57)	23 (59)	" (cm)
View B	23 1/2 (60)	24 (61)	24 1/4 (62)	25 (63)	" (cm)
Finished Inside Leg Seam					
View A	30" (76 cm) – All Sizes				
View B	24 1/2" (62 cm) – All Sizes				
Material Required: Fabric requirement allows for nap, one-way design or shading. Extra fabric may be needed to match design or for shrinkage.					
Fabric 60" (152 cm) Wide with Greatest Degree of Stretch on Crosswise Grain					
Top View A	3/4 (0.70)	3/4 (0.70)	3/4 (0.70)	3/4 (0.70)	yd (m)
Top View B	1 (0.95)	1 (0.95)	1 (0.95)	1 3/4 (1.60)	yd (m)
Pants View A	1 5/8 (1.50)	2 3/8 (2.20)	2 3/8 (2.20)	2 5/8 (2.40)	yd (m)
Pants View B	1 3/8 (1.30)	2 (1.85)	2 1/8 (1.95)	2 1/4 (2.10)	yd (m)
Fabric 60" (152 cm) Wide with Greatest Degree of Stretch on Lengthwise Grain					
Top View A	1 1/8 (1.05)	1 1/4 (1.15)	1 1/4 (1.15)	1 1/4 (1.15)	yd (m)
Top View B	1 1/4 (1.15)	1 3/8 (1.30)	1 3/8 (1.30)	1 1/2 (1.40)	yd (m)
Pants View A & B	1 7/8 (1.75)	2 (1.85)	2 1/8 (1.95)	2 1/4 (2.10)	yd (m)
Fabric 45" (115 cm) Wide with Greatest Degree of Stretch on Lengthwise Grain					
Top View A	1 1/8 (1.05)	1 1/4 (1.15)	1 1/4 (1.15)	1 1/4 (1.15)	yd (m)
Top View B	1 1/2 (1.40)	1 5/8 (1.50)	1 5/8 (1.50)	1 7/8 (1.75)	yd (m)
Pants View A	—	*NOT SUITABLE*		—	
Pants View B	1 7/8 (1.75)	2 (1.85)	2 1/4 (2.10)	2 1/2 (2.30)	yd (m)
Swimwear Lining 45" (115 cm) Wide with Greatest Degree of Stretch on Lengthwise Grain					
Top View A	3/4 (0.70)	7/8 (0.80)	7/8 (0.80)	1 (0.95)	yd (m)

Notions: Thread. **TOP VIEW A:** 1 1/4 yd (1.15 m) of 3/4" (2 cm) wide swimwear elastic, 2 1/2 yd (2.30 m) of 3/8" (1 cm) wide swimwear elastic. **TOP VIEW B:** Scrap piece of fusible interfacing. **PANTS:** 1 3/8 yd (1.30 m) of 3/8" (1 cm) wide swimwear elastic.